

BILANCI ENERGJITIK 4-MUJORI 2021 (MWh)

Prodhimi neto publik	Prodhuar nga PPE në rrjetin e OSSH			Prodhuar nga PPE në rrjetin e OST		Prodhues të pavarur					Prodhim neto vendas
	Neto (Selit)	HC.Priv/Kon në Rrjetin e OSSH për FTL	FOTOVOLTAIK	HC.Priv/Kon në Rrjetin e OST për FTL	Neto Ashta	Neto Banjaja	Neto Mogleca	Neto KURUM	H/C Peshqesh	H/C Fangur	
2,411,089	11,417	482,700	11,709	530,915	130,438	140,700	214,651	203,452	62,644	143,286	4,343,001
<small>Balanca e shkëmbimeve në Interkoneksion Balanca e shkëmbimeve të Energjisë (OST-GSHEZ) Shkurtesa OST për Hamburg-konsum vertikal Konsumuar nga Treg i Tërë Energji nga Privatimi i Interkoneksionit Energji për shërbime ndihmëse + detyrues</small>											
Energji për FSHU nga KESH sha											
914,926											
1,496,163											

Energji e siguruar nga FTL					
Blerje Neto (Selit)	Blerje HC.Priv/Kon në Rrjetin e OSSH për FTL	Blerje nga Fotovoltaikët	Blerje HC.Priv/Kon në Rrjetin e OST për FTL	Blerje Neto Ashta	Blerje në Treg të Liberalizuar nga FTL
11,417	482,700	11,709	530,915	130,438	5,758
1,172,937					

Balanca në interkoneksion (dhënie)
1,336,501

Energji nga KESH për FSHU	Energji nga FTL për FSHU	Energji për humbjet OSSH	Energji për Klientet në treg të liberalizuar lidhur në OSSH me furnizues FTL	Kliente të FTL në treg të Liberalizuar	Eksporti FTL
1,496,163	397,518	682,819	6,901	3,479	82,220
384					
Energji për FSHU					
1,893,681					
<small>Energji në hyrje dhe dalje (transmetuar) për Klientet në treg të liberalizuar e të lidhur në rrjetin e OSSH</small>					
Klient të Shërbimit Universal	Kliente të mundësisë së Fundit	20,628			
1,886,396	6,901	-20628			

Konsumi total vendas
0

TABELA ME TE DHENA PERIODIKE (MUJORE) TE OSHEE Group Sh.a 2021			Janar	Shkurt	Mars	Prill	Progresive
A	Energji Totale e Hyrë në OSHEE Group Sh.a (MWh)	A=A.1+A.3-A1.7	724,554	629,962	662,183	590,810	2,607,509
A.1	Energji e transmetuar nepermjet OST per llogari te OSHEE Group Sh.a	A.1=Sum(A.1.1,A1.6)	599,793	531,361	562,967	489,782	2,183,903
A.1.1	Nga KESH -Gen nepermjet OST		410,055	354,097	425,947	306,064	1,496,163
A.1.2	Nga OST si import i OSHEE Sh.a		1,488	1,344	1,486	1,440	5,758
A.1.3	Energji e transmetuar per klientet 35kV (te dal ne treg te parregulluar furnizues te tjere)		4,713	4,782	5,699	5,435	20,628
A.1.4	Nga OST per llogari te klienteve te FSHU Sh.a prodhuar nga HEC-et ne rrjetin e transmetimit		183,538	171,138	129,835	176,843	661,354
A.1.5	Nga TEC VLORA nepermjet OST		n/a	n/a	n/a	n/a	n/a
A.1.6	Nga Bistrica 1,2 nepermjet OST		n/a	n/a	n/a	n/a	n/a
A.1.7	Export FTL Sh.a			30,980	11,050	40,190	82,220
A.2	Energji elektrike e injektuar ne OST nga Hec-et Lokale	A.2	61,299	66,197	46,597	74,064	248,157
A.3	Energji e transmetuar direkt ne rrjetin e OSSH Sh.a	A.3 = Sum(A.3.1, A.3.3)	124,761	129,581	110,266	141,218	505,826
A.3.1	HEC Ulez,Lanabregas		3,249	2,958	2,527	2,683	11,417
A.3.2	Impjanet Private/me Koncesion		119,778	124,135	103,961	134,826	482,700
A.3.3	Burimet e Rinovueshme Fotovoltaik (BRE)		1,734	2,488	3,779	3,708	11,709
B	Energji Totale ne Rrjetin e Shperdarjes (MWh)	B=A+ A.1.3+A.2	785,853	696,159	708,781	664,873	2,855,666
C	Humbjet Totale ne Rrjetin e Shperdarjes (MWh)	C=C.1+C.2+C.3	219,024	139,953	183,717	140,125	682,819
C.1	Humbje Teknike njesite e TL (MWh)		9,713	9,094	9,360	10,648	38,816
C.2	Humbje Teknike ne Zona (MWh)		133,183	83,159	108,467	82,462	407,271
C.3	Humbje Jo Teknike ne Zona (MWh)		76,128	47,699	65,890	47,015	236,732
C.1	Humbjet Totale ne OSSH Sh.a (%)	C.1= C/B	27.87%	20.10%	25.92%	21.08%	23.91%
C.1.1	Humbje Teknike njesite e TL (%)		1.24%	1.31%	1.32%	1.60%	1.36%
C.2.1	Humbje Teknike ne Zona (%)		17.17%	12.11%	15.52%	12.61%	14.47%
C.3.1	Humbje Jo Teknike ne Zona (%)		9.69%	6.85%	9.30%	7.07%	8.29%
D	Energjia e perdorur ne Rrjetin e Shperdarjes	D=Sum(D.1:D.7)	558,828	553,799	522,603	523,383	2,158,612
D.1	Shitur Klienteve FMF (MWh)	D.1=D.1.1+D.1.2	2,350	1,572	1,555	1,424	6,901
D.1.1	Shitur Klienteve FMF Privat (MWh)		192	18	18	13	240
D.1.2	Shitur Klienteve FMF JoBuxhetore(MWh)		2,158	1,554	1,537	1,411	6,661
D.2	Shitur Klienteve Private (MWh)	D.2= D.2.1+D.2.2+D.2.3	132,045	130,668	133,656	131,218	527,586
D.2.1	Shitur nga rrjeti i Transmetimit per llogari te FSHU Sh.a		-	-	-	-	-
D.2.2	Shitur per nevoja te veta te FSHU Sh.a		703	606	593	542	2,444
D.2.3	Shitur Klienteve Private (pa ate per nevoja te veta dhe Ne TL)		131,341	130,062	133,063	130,676	525,142
D.3	Shitur Klienteve JoBuxhetore (MWh)		25,919	24,687	27,142	26,930	104,679
D.4	Shitur Klienteve Buxhetore (MWh)		26,459	24,961	24,144	21,244	96,807
D.5	Shitur Klienteve Familjare (MWh)	D.5=D.5.1+D.5.2	306,044	300,930	283,810	263,069	1,153,853
D.5.1	Shitur Klienteve Familjare (MWh)		299,586	294,646	277,594	256,955	1,128,781
D.5.2	Shitur Klienteve Familjare per Ambientet e Perbashketa		6,458	6,285	6,216	6,114	25,073
D.6	Energji elektrike e injektuar ne OST nga Hec-et Lokale	D.6=A.2	61,299	66,197	46,597	74,064	248,157
D.7	Energji elektrike e perdorur nga klientet ne treg te parregulluar	D.7	4,713	4,782	5,699	5,435	20,628
E	Faturuar muaji Parardhës (000/leke)		6,641,071	6,400,370	6,245,453	6,158,373	25,445,267
F	Arketimet e muajit aktual (000 leke)	G=F.1+F.2+F.3+F.4	5,737,532	5,691,538	6,378,961	5,604,601	23,412,632
F.1	Arketuar per faturat korrente te vitit aktual		4,135,705	3,770,254	4,067,618	3,860,196	15,833,773
F.3	Arketuar per faturat e tjera te vitit aktual		15,512	12,369	1,622,906	1,442,620	3,093,407
F.4	Arketuar per faturat e tjera te viteve te kaluara		1,586,315	1,908,915	688,438	301,785	4,485,452
F.1	Arketimet e muajit aktual (%)	F.1=F/E	86.4%	88.9%	102.1%	91.0%	92.0%
F.1.1	Arketuar per faturat korrente te vitit aktual (%)	F.1.1=F.1/E	62.3%	58.9%	65.1%	62.7%	62.2%
F.1.3	Arketuar per faturat e tjera te vitit aktual (%)	F.1.3=F.3/E	0.2%	0.2%	26.0%	23.4%	12.2%
F.1.4	Arketuar per faturat e tjera te viteve te kaluara (%)	F.1.4=F.4/E	23.9%	29.8%	11.0%	4.9%	17.6%
G	Faturuar muaji Raportues (000/leke)		6,400,370	6,245,453	6,158,373	5,817,548	24,621,744
1	Nr. Konsumatoreve gjithsej (Nr.)		1,266,069	1,266,734	1,268,062	1,270,888	1,266,069
2	Fatura te emetuara me lexim konsumi (Nr.)		976,680	958,732	941,330	957,668	3,834,410
3	Sasia e energjise se faturuar me lexim konsumi (MWh)						-
4	Fatura te emetuara me lexim "0" (Nr.)		289,389	282,144	326,732	313,220	1,211,485
5	Nr.Faturave te emetuara pa lexim (energji e pa matur) (Nr.)						-
6	Sasia e energjise se faturuar si energji e pamatur (MWh)		-	-	-	-	-
7	Nr.Faturave te emetuara pa lexim (dem ekonomik) (Nr.)		794	303	102	197	1,396
8	Sasia e faturuar si dem ekonomik (MWh)		7,189	1,563	1,619	391	10,763
9	Nr.Faturave per te cilat eshte arketuar kamat vonese (Nr.)		12,717	320,816	391,076	323,599	1,048,208
10	Vlera e Kamat vonesave te arketuara (000/leke)		1,343	48,333	84,054	54,180	187,910

BILANCI ENERGJITIK I FTL sha, FSHU SHA DHE OSSH sha PER 4-MUJORIN 2021 (MWh)			
1	ENERGJI TOTALE E HYRE NE RRJETIN E OSSH-se	2+3+7.6	2,689,728
2	Energji e shitur nga KESH sha per FSHU sha		1,496,163
3	ENERGJI NE HYRJE E BLERE NGA FTL (OSHEE Group sha)	3.1+3.2+3.3	1,172,937
3.1	Blere nga Prodhimi i PPE në rrjetin e OSSH		505,826
3.2	Blere nga Prodhimi i PPE në rrjetin e OST		661,353
3.3	Blere ne Treg të Liberalizuar nga FTL sha		5,758
4	ENERGJI NE DALJE E SHITUR NGA FTL (OSHEE Group sha)	4.1+4.2+4.3+4.4+4.5	1,172,937
4.1	Energji nga FTL per FSHU		397,518
4.2	Energji nga FTL për humbjet OSSH		682,819
4.3	Energji e furnizuar nga FTL për Kliente ne treg të liberalizuar (ne rrjetin e OSSH)		6,901
4.4	Energji e shitur nga FTL ne treg te liberalizuar		3,479
4.5	Eksport i FTL		82,220
5	ENERGJI NE HYRJE PER FSHU (OSHEE Group sha)	2+4.1	1,893,681
5.1	Energji Faktike nga KESH sha per FSHU sha	2	1,496,163
5.2	Energji nga FTL per FSHU	4.1	397,518
6	ENERGJI NE DALJE PER FSHU (OSHEE Group sha)	6.1 deri 6.14	1,893,305
6.1	Shitur Klienteve te Sherbimit Universal		1,882,925
6.11	Shitur klienteve Familiare		1,153,853
6.12	Shitur klienteve Private		527,586
6.13	Shitur klienteve Buxhetore		96,807
6.14	Shitur klienteve JoBuxhetore		104,679
6.2	Shitur Klienteve të mundesisë së Fundit		6,901
6.21	Shitur Klienteve FMF Privat (MWh)		240
6.22	Shitur Klienteve FMF JoBuxhetore(MWh)		6,661
6.23	Klienteve të FTL ne treg te liberalizuar		3,479
7	ENERGJI QE KALON NE RRJETIN E OSSH-se	4.2+2+4.1+7.4+7.5+7.6	2,855,665
7.1	Energji nga FTL për humbjet OSSH		682,819
7.2	Energji Faktike nga KESH sha per FSHU sha		1,496,163
7.3	Energji nga FTL per FSHU		397,518
7.4	Energjia e ngitur ne rrjetin e transmetimit nga centralet e lidhura ne rrjetin e OSSH		248,157
7.5	Energji e furnizuar nga FTL për Kliente ne treg të liberalizuar (ne rrjetin e OSSH)		6,901
7.6	Energji vetem per tu transmetuar tek klientet ne treg te liberalizuar (ne rrjetin e OSSH)		20,628
7.7	Klienteve të FTL ne treg te liberalizuar		3,479
8	Humbje totale ne rrjetin e OSSH-se (%)	7.1 x 100 / 7	23.91

Bilanci i Energjisë Elektrike për vitin 2021

OST sha	Njësia e Matjes	Janar	Shkurt	Mars	Prill	Shuma 2021 [MWh]
	MWh					
Prodhimi nga KESH GEN në Rrjetin e Transmetimit	1	648,222	651,567	590,022	521,278	2,411,089
Prodhimi nga HEC/HPP e vogla në Rrjetin e Transmetimit	2	61,299	66,197	46,597	74,064	248,157
Prodhimi nga PPE/IPP e mëdha në Rrjetin e Transmetimit	3	147,262	137,659	98,116	147,878	530,915
Prodhimi nga HEC Peshqesh	4	18,063	16,059	12,828	15,694	62,644
Prodhimi nga HEC Banja	5	37,952	43,734	31,179	27,835	140,700
Prodhimi nga HEC FANG	6	49,111	39,787	28,899	25,490	143,286
Prodhimi nga HEC Moglicë	7	35,215	77,681	60,372	41,383	214,651
Prodhimi nga nga HEC Ashta	8	36,275	33,478	31,720	28,965	130,438
Prodhimi nga KURUM (Ulez-Shkopet&Bistrica1,2)	9	53,818	51,870	48,597	49,167	203,452
Eksperti (-) nga Linjat e Interkonjeksionit	D	367,668	479,008	299,881	334,456	1,481,013
Importi (+) nga Linjat e Interkonjeksionit	R	42,302	14,791	42,120	45,298	144,511
Balanca (Total Interkonjeksioni)	10=(R-D)	325,365	464,216	257,761	289,159	1,336,501
Energjia Totale në Marrje	11=(1+2+3+4+5+6+7+8+9+R)	1,129,520	1,132,825	990,450	977,050	4,229,845
Humbjet në Rrjetin e Transmetimit (përfshirë Nevojat Vetjake)	12	26,474	27,612	19,971	22,832	96,890
Humbjet në Rrjetin e Transmetimit %	13=12/11	2.34	2.44	2.02	2.34	2.29
Energjia Totale në Dhënie	14=(11-12)	1,103,046	1,105,213	970,478	954,218	4,132,955
<i>Transmetuar në Linjat e Interkonjeksionit</i>	15=D	367,668	479,008	299,881	334,456	1,481,013
<i>Transmetuar tek Klientët e Kualifikuar</i>		74,214	59,565	72,016	96,044	301,838
<i>EL220-L220KURUM/337</i>		31,422	24,419	13,837	33,251	102,929
<i>F.Arrez-T3/653</i>		1,166	957	1,432	881	4,436
<i>Titan T1,T2</i>		8,210	4,226	11,668	11,488	35,592
<i>FUSHE KRUIJE 220kV-T2/058</i>		8,497	2,516	10,007	12,804	33,824
<i>N/ST 220/6,3Colacent-T1/336</i>		539	902	1,312	1,472	4,224
<i>N/ST i GSA EL 110kV-T1/694</i>		9,128	8,183	9,056	8,709	35,076
<i>N/ST i GSA EL 110kV-T2/960</i>		-	-	-	-	-
<i>N/ST i AES EL 110kV-T1/690</i>		7,374	6,447	7,060	7,050	27,931
<i>N/ST I AES EL 110kV-T2/692</i>		79	4,883	7,347	7,391	19,700
<i>HEC Moglice T1,T2,T3</i>		5	14	1	4	24
<i>HEC Peshqesh-T1/633</i>		3	2	4	0.38	9
<i>Lajthiza T1/742</i>		367	368	406	408	1,549
<i>HEC Ashta1-T1,HEC Ashta2-T1,</i>		-	-	-	0.15	0
<i>HEC Banje T1,T2</i>		6	2	11	13	31
<i>HEC Fang-T1,T2,</i>		1	8	25	25	59
<i>Gjerim KURUM</i>		3	1	1	0.42	5
<i>TEC Ballsh-T1/598</i>		73	62	68	62	265
<i>FERRO KROM-F1,F2,F3,F4</i>		7,413	6,638	9,847	12,549	36,448
<i>Transmetuar në rrjetin e Shpërndarjes</i>		661,092	566,578	598,514	523,656	2,349,840
<i>Transmetuar në rrjetin e Shpërndarjes 110 kV</i>		562,636	486,256	520,646	458,142	2,027,680
<i>Transmetuar në rrjetin e Shpërndarjes 35 kV</i>		50,014	38,067	38,702	33,459	160,241
<i>Transmetuar në rrjetin e Shpërndarjes 6, 10, 20 kV</i>		48,443	42,256	39,167	32,054	161,920

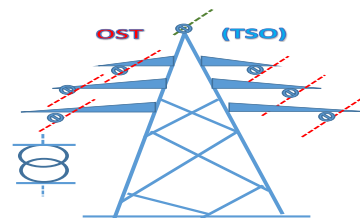
TË DHËNA MBI TRANSMETIMIN E ENERGJISË ELEKTRIKE NGA OPERATORI I SISTEMIT TE TRANSMETIMIT NË SHQIPËRI PËR 4-Mujorin e VITIT 2021 (MWh)

	Janar	Shkurt	Mars	Prill	2021		
HYRJE	Dhene nga H/C e KESH ne rrjetin e Transmetimit	648,222	651,567	590,022	521,278	2,411,089	4,229,845
	Dhene nga H/C e me perparesi ne rrjetin e Transmetimit	147,262	137,659	98,116	147,878	530,915	
	Energji nga Hec-et Lokale levruar ne Rrjetin e Transmetimit (me ngritje)	61,299	66,197	46,597	74,064	248,157	
	Gjenerim KURUM (prodhues i pavarur)	53,818	51,870	48,597	49,167	203,452	
	HEC ASHTA (prodhues i pavarur Kontr.me OSHEE)	36,275	33,478	31,720	28,965	130,438	
	HEC BANJE (prodhues i pavarur)	37,952	43,734	31,179	27,835	140,700	
	HEC MOGLICE (prodhues i pavarur)	35,215	77,681	60,372	41,383	214,651	
	HEC PESHQESH-T1/637 (prodhues i pavarur)	18,063	16,059	12,828	15,694	62,644	
	HEC FANGU (prodhues i pavarur)	49,111	39,787	28,899	25,490	143,286	
Importi(Hyre) nga Linjat e Interkonjeksionit	42,302	14,791	42,120	45,298	144,511		
DALJE	Humbjet ne Transmetim	26,474	27,612	19,971	22,832	96,890	4,229,845
	Transmetuar ne Rrjetin e Spherndarjes	661,092	566,578	598,514	523,656	2,349,840	
	Klientene treg te hapur (TL) (+Tec Ballsh)	74,286	59,627	72,083	96,106	302,102	
	Eksporti (Dale) nga Linjat e Interkonjeksionit	367,668	479,008	299,881	334,456	1,481,013	
Humbjet ne Transmetim	26,474	27,612	19,971	22,832	96,890		
Humbjet ne Transmetim ne %	2.34	2.44	2.02	2.34	2.29		

PARAQITJA SKEMATIKE E FLUKSEVE TE ENERJISE NE SISTEMIN ELEKTRO-ENERGJITIK SHQIPETAR 4-mujori VITI 2021 (MWh)

Energji e lëvruar nga H/C-et e KESH sha	Energji e levruar nga prodhuesit me përparësi lidhur ne TL (kontrate me OSHEE)	Energji e levruar nga H/C ASHTA lidhur ne TL (kontrate me OSHEE)	Energji e levruar nga H/C et Priv/konc lidhur ne TL (Prodhues ne treg te hapur)					Energji ne hyrje nga Interkonieksioni
2,411,089	530,915	130,438	Kurum	Banje	Moglice	Fangu	Peshqesh	144,511
			203,452	140,700	214,651	143,286	62,644	

4,229,843 — ENERJJI HYRESE NE RRJETIN E TRANSMETIMIT



248,157		HC.Priv/Kon + CENTR Fotovoltaikë ne Rrjetin e OSSH	Humbje + Konsum ne Transmetim	Konsumi i klienteve në treg të hapur te lidhur ne Transmetim	Energji ne dalje nga Interkonieksioni
Neto (Selit)	11,417				
		505,826	265 Tec Ballshi		

Energji e tranmetuar direkt ne rrjetin e OSSH	257,669
Energji e transmetuar ne rrjetin e Shperndarjes nga OST	2,349,573

2,607,507 — ENERJJI HYRESE NE RRJETIN E SHPERNDARJES

Lëvruar ne rrjetin e OSHEE për FMF jo klient (tarifë aksesi)	20,628	6,901	3,471	FTL (Shitur klienteve ne treg te liberalizuar)
--	--------	-------	-------	--

Energji e përdorur për klientët e FSHU sha
2,576,507

Shitur Kons Familjare FSHU	1,153,853	1,893,297	2,576,116
Shitur Kons Jo Familjare FSHU	729,072		
Shitur Kons Jo Familjare FMF	6,901	682,819	391
Shitur Kons FTL	3,471		
Humbje tekn TL	38,816		
Humbje teknike ne zona	407,271		
Humbje Jo teknike ne zona	236,732		

LEGJENDA	
FSHU	FURNIZUES I SHERBIMIT UNIVERSAL
FMF	FURNIZUES I MUNDESISE SE FUNDIT

Burimi OST ,OSHEE Group sha

PRODHIMI NETO NE SHQIPERI	Janar	Shkurt	Mars	Prill	Progresivi 2020
Prodhimi Neto KESH sha.	648,222	651,567	590,022	521,278	2,411,089
Hec-et Private dhe Konc. (Rrjeti Shperndarjes)	119,778	124,135	103,961	134,826	482,700
Hec-et Private dhe Konc. (Rrjeti Transmetimit)	147,262	137,659	98,116	147,878	530,915
HEC Ashta	36,275	33,478	31,720	28,965	130,438
Prodhimi Neto Hec Lanabregas	3,249	2,958	2,527	2,683	11,417
Prodhimi Neto (Hec Ulez,Shkopet,Bistrica 1,2)	53,818	51,870	48,597	49,167	203,452
Prodhimi Hec Peshqesh	18,063	16,059	12,828	15,694	62,644
Prodhimi Hec Fangu	49,111	39,787	28,899	25,490	143,286
Prodhimi Hec Banja	37,952	43,734	31,179	27,835	140,700
Prodhimi Hec Moglica	35,215	77,681	60,372	41,383	214,651
Prodhimi i Centraleve Fotovoltaike	1,734	2,488	3,779	3,708	11,709
ENERGJIA NETO E PRODHUAR NE SHQIPERI	1,150,680	1,181,417	1,011,999	998,906	4,343,003

ENERGJI NGA INTERKONEKSIONI					
Energji ne dhenie nga Interkoneksioni	367,668	479,008	299,881	334,456	1,481,013
Energji ne marrje nga Interkoneksioni	42,302	14,791	42,120	45,298	144,511
Ballanca Hyrje/Dalje nga Interkoneksioni	325,365	464,216	257,761	289,159	1,336,501

KONSUMI I ENERGJISE NE SHQIPERI	
Konsumi i klientëve Tarifore	1,882,925
Konsumi i klientëve të furnizuar si FMF	6,901
Konsumi i klientëve si dem ekonomik	10,763
Konsumi i Klientëve që përdorin rrjetin për energjine e blerë ne treg të liberalizuar	20,628
Energji për Klientet ne treg të liberalizuar lidhur në OSSH me furnizues FTL	3,471
Konsumi për mbulimin e humbjeve	682,819
Konsumuar nga Klientet e lidhur në OST	301,838
Konsumuar nga OST (humbje +nevoja vetiake)	96,890
Konsumuar Tec Ballshi	265
KONSUMI TOTAL 2021 (4-mujori)	3,006,500

PRODHIMI GJATE VITIT 2021 NGA CENTRALET E LIDHURA NE RRJETIN E TRANSMETIMIT (MWh)									
HECET DHE KAPACITETI	MW	SUBJEKTI	LIDHJA	JANAR	SHKURT	MARS	PRILL	4-M 2021	
Hec "Fierze" me fuqi 500 MW	500.000	"KESH" sha	220 kV	648,222	651,567	590,022	521,278	2,411,089	
Hec "Koman" me fuqi 600 MW	600.000		220 kV						
Hec "V. Dejes" me fuqi 250 MW	250.000		220 kV						
Hec Vlora me fuqi 98 MW	98.000	"KESH" sha	220 kV	53,818	51,870	48,597	49,167	203,452	
Hec "Ulez" me fuqi 25,2 MW	25.200		110 kV						
Hec "Shkopet" me fuqi 24 MW	24.000		110 kV						
Hec "Bistrica 1" me fuqi 22,5 MW	22.500		110 kV						
Hec "Bistrica 2" me fuqi 5 Mw	5.000	"Ayen As Energji" sha	110 kV	18,063	16,059	12,828	15,694	62,644	
Hec "Peshqesh" me fuqi 27,94 MW,;	27.940		220 kV						
Hec "Fangu" me fuqi 74.6 MW,;	74.600	"Devoll Hydropower" sha	220 kV	37,952	43,734	31,179	27,835	140,700	
Hec "Banje" me fuqi 73 MW	73.000		110 kV						
Hec "Moglice" me fuqi 184 MW	184.000		111 kV						
Hec "Ashta" me fuqi 48,2 MW	48.200	"Energji Ashta" shpk	110 kV	35,215	77,681	60,372	41,383	214,651	
Hec "Bishnica 2" me fuqi 2,5 MW	2.500	"HEC Bishnica 1,2 "shpk	110 kV	36,275	33,478	31,720	28,965	130,438	
Hec "Dardhe" me fuqi 5,8 MW	5.800	"Wenerg " shpk	110 kV	1,694	1,852	1,070	1,793	6,408	
Hec "Truen" me fuqi 2,5 MW	2.500	"TRUEN" shpk	110 kV	3,494	2,997	1,553	2,768	10,812	
Hec "Ternove" me fuqi 8.385 Mw	0.921	"TEODORI 2003" shpk	110 kV	838	842	591	1,146	3,416	
Hec "Gjorice" me fuqi 4.18 Mw (+h/c ne prodhim)	29.610	"DITEKO" shpk	110 kV	19,328	16,808	15,456	17,931	69,523	
Hec "Sllabinje" me fuqi 13,8 MW	13.800	"Power Elektrik Slabinje" shpk	110 kV	11,206	11,099	6,783	11,129	40,218	
Hec "Bele 1" me fuqi 5 MW ;	5.000	"Euron Energy" shpk	110 kV	15,653	17,624	15,157	19,365	67,799	
Hec "Topojan 2" me fuqi 5,8 MW,	5.800								
Hec "Bele 2" me fuqi 11 MW ;	11.000								
Hec "Topojan 1" me fuqi 2,9 MW,	2.900								
Hec "Orgjost 1 Ri" me fuqi 4,8 MW	4.800	"Energial" shpk	110 kV	2,860	2,275	1,480	3,434	10,049	
Hec "Cerunje-1" me fuqi 2,3 MW;	2.300	"Energy partners Al" shpk	110 kV	2,860	2,275	1,480	3,434	10,049	
Hec "Cerunje-2" me fuqi 2,8 MW;	2.800								
Hec "Rrups" me fuqi 3,6 MW;	3.600								
Hec "Rapuni 1,2" me fuqi 4 dhe 4,1 MW	8.100	"C & S Construction Energy" shpk	110 kV	4,628	4,828	3,958	5,138	18,551	
Hec "Rapuni 3,4" me fuqi 8,857 MW	8.850	"C & S Energy" shpk	110 kV	5,204	5,551	4,422	5,085	20,262	
Hec "Llapaj" me fuqi 13,62 MW	13.620	"Gjo.Spa.POWER" shpk	110 kV	6,807	6,587	4,428	8,264	26,086	
Hec "Lengarice" me fuqi 8,94 MW	8.940	"Lengarica & Energy" shpk	110 kV	6,752	6,031	4,481	3,347	20,612	
Hec "Lura 1" me fuqi 6,54 MW	6.540	"Erdat Lura" shpk	110 kV	8,580	7,474	4,728	8,481	29,263	
Hec "Lura 2" me fuqi 4,02 MW	4.020		110 kV						
Hec "Lura 3" me fuqi 5,66 MW	5.660		110 kV						
Hec "Malla" me fuqi 5,455 MW	5.455	"Gjure Rec" shpk	110 kV	3,258	2,757	1,773	2,942	10,730	
Hec Prella me fuqi 14,97 MW	14.970	"Prella Energji"	110 kV	7,966	6,119	3,750	7,718	25,552	
HEC Cemerica 1	0.88	"REJ ENERGY" shpk	110 kV	2,915	2,444	1,609	2,915	9,883	
HEC Cemerica 2	1.08		110 kV						
HEC Cemerica 3	2.1		110 kV						
HEC TUÇ	4.47	MC Inerte Lumzi	110 kV	8,403	6,039	3,255	4,306	22,004	
HEC Lumzi	11		110 kV						
Hec Denas	14.5	"Denas Power" shpk	110 kV	8,003	6,821	4,086	7,281	26,191	
Llënga 1	1.73	"HEC LLËNGË" sh.p.k	110 kV	1,111	1,037	561	1,547	4,256	
Llënga 2	0.3		110 kV						
Llënga 3	1.5		110 kV						
HEC Shpella Poshte 2	2.3	Liria Energji shpk	110 kV	1,651	1,693	998	2,157	6,499	
HEC Germani 1	4.8	SA'GA-MAT shpk	110 kV	2,884	2,250	1,389	2,260	8,783	
HEC Germani 2	1.5		110 kV						
Hec Lashkiza 1	4.076	HEC Lashkiza shpk	110 kV	1,316	1,171	873	1,154	4,514	
Hec Lashkiza 2	0.882		110 kV						
Hec Seta 1+2	7.454	"Hydro Seta" sh.p.k	110 kV	6,330	6,254	3,717	6,844	23,145	
Hec Seta 3	2.722		110 kV						
Hec Seta 4	4.724		110 kV						
HEC Darsi 1,2,3	12.7		110 kV						
HEC Egnatia	5.1	REMI shpk	110 kV	2,515	2,221	1,054	2,100	7,889	
HEC Seka & Zais/684	14.96	SEKA Hydropower shpk	110 kV	4,998	6,659	5,566	9,784	27,007	
HEC ARSTI	3.13	Hec Arsti shpk	110 kV	1,483	2,362	1,573	2,204	7,622	
HEC KASKADA GJADER T1/344	24.9	S.P.E. Gjader shpk	110 kV	-	-	-	1,358	1,358	
HEC-et Dragobia&Ceremi/686	21.9	Dragobia Energy shpk	110 kV	-	-	(6)	(16)	(22)	
	2,251			147,262	137,659	98,116	147,878	530,915	

PRODHIMI GJATE VITIT 2021 NGA CENTRALET E LIDHURA NE RRJETIN E SHPERNDARJES (MWh)									
HECET DHE KAPACITETI	MW	SUBJEKTI	LIDHJA	JANAR	SHKURT	MARS	PRILL	2021	
Hec "Lanabregas" me fuqi 5 MW	5.000	"Hec Lanabregas" sha	35	3,249	2,958	2,527	2,683	11,417	
Hec "Lenie" me fuqi 400 kW	0.400	"EMIKEL 2003" sh.p.k	10kV	250	242	275	257	1,024	
Hec "Çorovode" me fuqi 200 kW	0.200		10kV	67	96	103	103	369	
Hec "Smokthine" me fuqi 9,2 MW	9.200	"Albania Green Energy" sh.p.k	35 kV	5,065	4,854	4,818	3,480	18,216	
Hec "Bulgize" me fuqi 0,6 MW (Diber)	0.600		10kV	121	131	112	172	537	
Hec "Homesh" me fuqi 0,395 MW (Diber)	0.395		10kV	51	86	55	78	270	
Hec "Zerqan" me fuqi 0,625 MW (Diber)	0.625		6kV	62	80	163	191	496	
Hec "Arras" me fuqi 4,8 MW (Diber)	4.800		20kV	842	2,710	2,133	2,716	8,401	
Hec "Orgjost" me fuqi 1,2 MW (Kukes)	1.200		10kV	404	689	712	780	2,585	
Hec "Lekbibaj" me fuqi 1,4 MW (Tropoje)	1.400		10kV	875	556	611	723	2,766	
Hec "Dukagjin" me fuqi 0,64 MW (Shkoder)	0.640		10kV	151	117	157	167	592	
Hec "Marjan" me fuqi 0,2 MW (Korce)	0.200		10kV	-	-	-	-	-	
Hec "Lozhan" me fuqi 0,1 MW (Korce)	0.100		10kV	62	48	40	84	235	
Hec "Barmash" me fuqi 0,83 MW (Kolonje)	0.830		10kV	319	352	331	220	1,222	
Hec "Treske 2" me fuqi 0,25 MW (Korce)	0.250		10kV	92	118	120	125	454	
Hec "Nikolic" me fuqi 0,7 MW (Korce)	0.700		10kV	144	216	190	206	756	
Hec "Funares" me fuqi 1,92 MW (Librazhd)	1.920		10kV	768	672	860	831	3,130	
Hec "Lunik" me fuqi 0,2 MW (Librazhd)	0.200		10kV	111	123	149	141	524	
Hec "Kerpice" me fuqi 0,42 MW (Gramsh)	0.420		6kV	89	73	57	59	278	
Hec "Ujanik" me fuqi 0,63 MW (Skrapar)	0.630		10kV	204	270	201	243	919	
Hec "Borsh" me fuqi 0,25 MW (Sarande)	0.250	6kV	109	135	-	268	513		
Hec "Leshnice" me fuqi 0,38 MW (Sarande)	0.380	10/6kV	124	138	134	80	476		
Hec "Velcan" me fuqi 1,2 MW (Korce)	1.200	10kV	389	537	450	516	1,893		

Hec "Muhur" me fuqi 0,25 MW (Diber)	0.250		6kV	76	85	78	70	309
Hec "Rajan" me fuqi 1,02 MW (Kolonje)	1.020		10kV	459	538	516	379	1,892
Hec "Lure" me fuqi 0,75 MW (Diber)	0.750		10kV	-	94	95	110	299
Hec "Gjanc" me fuqi 2,96 MW	2.960	"Spahiu Gjanc" sh.p.k.	35 kV	-	166	1,090	1,210	2,467
Hec "Bogove" me fuqi 2,5 MW	2.500	"Wonder power" sha	35 kV	1,490	1,377	946	1,204	5,017
Hec "Xhyre" me fuqi 570 kW	0.570	"Amal" sh.p.k	10kV	185	260	266	254	964
Hec "Stranik" me fuqi 4.6 MW	4.600		35kV	1,344	1,762	1,845	2,667	7,617
Hec "Zall Tore" me fuqi 3 MW	3.000	"Hidroinvest 1" shpk	35kV	1,626	1,891	1,619	1,984	7,121
Hec "Klos" me fuqi 1,95 MW	1.950	"Malido-Energji" shpk	6kV	199	722	458	600	1,979
Hec "Borje" me fuqi 1.5 MW	1.500	"HIDROALBANIA Energji" shpk	35kV	2,112	2,824	2,018	3,651	10,605
Hec "Cernaleve" me fuqi 2.95 MW	2.950	"HIDROALBANIA Energji" shpk	35kV	923	1,297	883	1,714	4,817
Hec "Cernaleve 1" me fuqi 3.27 MW	3.270	"HIDROALBANIA Energji" shpk	35kV	1,096	1,551	976	1,990	5,612
Hec "Murdarh 1" me fuqi 2.68 MW	2.680		10kV	2,009	1,794	1,879	1,776	7,457
Hec "Murdarh 2" me fuqi 1 MW	1.000	"HydroEnergy" shpk	10kV	1,101	695	1,088	936	3,820
Hec "Dishnice" me fuqi 0.2 MW	0.200	"Dishnica Energy" shpk	10kV	80	99	74	90	344
Hec "Lubonje" me fuqi 0.3 Mw	0.300	"Elektro Lubonje" shpk	10kV	156	171	92	126	545
Hec "Peshke" me fuqi 3.43 MW	3.430	"Koka & Ergi Energy Peshk" shpk	35kV	2,085	1,762	1,790	2,193	7,829
Hec "Labinot-Mal" me fuqi 0.25 MW	0.250	"Ansara Koncension" shpk	6kV	37	38	50	44	169
Hec "Pobreg" me fuqi 12,3 MW	12.300	"Energy Plus" shpk	35kV	5,239	6,440	5,461	7,214	24,354
Hec "Vlushe" me fuqi 14.2 MW	14.200	"Hec Vlushe" shpk	35kV	9,362	6,782	4,412	6,570	27,125
Hec "Belesova 1" me fuqi 0.150 MW	0.150	"Korkis 2009" shpk	6kV	52	63	35	45	194
Hec "Faqekuq 1,2" me fuqi (3 MW; 3.4 MW)	6.400	"HP OSTROVICA" shpk	35kV	2,872	2,199	1,378	3,113	9,562
Hec "Shemri" me fuqi 1 MW	1.000		10	566	539	337	663	2,104
Hec "Mgulle" me fuqi 0.28 MW	0.280	"Erald Energjitik" shpk	10kV	294	273	270	294	1,132
Hec "Kryezi 1" me fuqi 0.6 Mw	0.600	"Bekim Energjitik" shpk	10kV	731	625	440	699	2,494
Hec "Selishte" me fuqi 2 MW	2.000	"Selishte" shpk	35kV	906	727	817	1,219	3,669
Hec "Carshove" me fuqi 1.5 Mw	1.500		10kV	701	740	555	372	2,368
Hec "Ura e Dashit" me fuqi 1,2MW	1.200	"ERMA MP" shpk	10kV	2,285	2,092	1,649	1,339	7,366
Hec "Gizavesh" me fuqi 0.5 MW	0.500	"Dosku Energy" shpk	10kV	296	316	344	379	1,335
Hec "Koka 1" me fuqi 3,2 MW	3.200	"Snow Energy" shpk	35kV	665	540	738	1,211	3,154
Hec "Stravaj" me fuqi 3,6 MW	3.600	"Stravaj Energji" shpk	35kV	2,052	2,224	1,524	2,115	7,915
Hec "Picar 1" me fuqi 0,2 MW	0.200	"Peshku Picar 1" shpk	6kV	73	112	117	77	380
Hec "Vertop" me fuqi 1,52 Mw	1.520	"Hydro Salillari Energy" shpk	35kV	546	586	459	460	2,051
Hec "Martanesh" me fuqi 10,5 MW	10.500	"Albanian Power" shpk	35kV	2,255	2,425	2,681	3,108	10,469
Hec "Verba 1,2" me fuqi (2 MW, 3 MW)	5.000	"Hydro power Plant Of Korca" shpk	35kV	1,090	787	596	1,342	3,815
Hec "Fterra" me fuqi 1,08 MW	1.080	"Hidro Borshi" shpk	35kV	1,236	1,211	1,230	1,071	4,748
Hec "Ostren i Vogel" me fuqi 0,32 MW	0.320	"Lu & Co Eco Energy" shpk	10kV	58	103	108	118	387
Hec "Kozel" me fuqi 0,5 MW	0.500		10kV	187	173	123	173	656
Hec "Helmes 1" me fuqi 0,8 MW	0.800	"E.T.H.H." shpk	10kV	374	460	267	431	1,533
Hec "Helmes 2" me fuqi 0,5, MW	0.500		10kV	205	258	146	181	790
Hec "Qafezeze" me fuqi 0,4 MW	0.400	"Caushi Energji" shpk	10kV	500	524	492	515	2,031
Hec "Trebisht" me fuqi 1,775 MW	1.775	"S.A.G.L.E.Kompani" shpk	10kV	779	869	433	762	2,842
Hec "Mollaj" me fuqi 0,6 MW	0.600	"Energji Xhaci" shpk	10kV	145	149	177	176	647
Hec "Tucep" me fuqi 0,4 MW	0.400	"Tucep" shpk	10kV	239	258	275	283	1,056
Hec "Treska4" me fuqi 3,6 MW	3.600		35kV	1,352	1,554	1,362	1,218	5,487
Hec "Treska3" me fuqi 0.3 MW	0.300	"Hec-Treske" shpk	35kV	181	213	186	207	787
Hec "Treska 2T" 5 me fuqi 0.62 MW	0.620		35kV	414	446	343	351	1,554
Hec "Sotire1 & 2" me fuqi 2,2 MW	2.200	"Hidro Energy Sotire" shpk	35kV	887	888	674	808	3,258
Hec "Shutine" me fuqi 2,4 MW	2.400	"Shutina energji" shpk	10kV	747	578	463	612	2,399
Hec "Cekrez 1,2" me fuqi (0,23 MW; 0,43 MW)	0.660	"Zall Herr Energji 2011" shpk	6kV	351	339	410	402	1,502
Hec "Qarr" me fuqi 1 MW	1.000	"Hec Qarr & Kaltani" shpk	35kV	868	855	553	482	2,757
Hec "Bisak" me fuqi 1,3 MW	1.300	"Bardhgjana" shpk	6kV	708	665	483	632	2,488
Hec "Shales" me fuqi 1,08 MW	1.080		35kV	-	-	-	-	-
Hec "Strelce" me fuqi 1,174 MW	1.174	"Gjoka Konstruksion Energji" shpk	35kV	890	1,018	674	975	3,557
Hec "Shpelle" me fuqi 400 kW	0.400	"Sarolli" sh.p.k	10kV	144	205	149	298	796
Hec "Treska 1" me fuqi 130 kW	0.130	Star NRG sh.p.k	10kV	-	-	-	-	-
Hec "Bicaj" me fuqi 3,1 MW	3.100	"EN-KU" sh.p.k	10kV	-	-	-	-	-
Hec "Leskovik 1" me fuqi 1072 kW	1.072		10kV	44	44	50	49	187
Hec "Leskovik 2" me fuqi 1100 kW	1.100	"Maksi Elektrik" sh.p.k	10kV	57	55	62	62	237
Hec "Orenje" me fuqi 875 kW	0.875	"Juana" sh.p.k	10kV	211	281	258	211	961
Hec "Tamarë" me fuqi 750 kW	0.750	"WTS Energji" shpk	10kV	-	-	-	-	-
Hec "Benë" me fuqi 1000 kW	1.000	"Marjakaj" shpk	6kV	198	182	191	193	764
Hec "Vithkuq" me fuqi 2,715 MW	2.715	"Favina 1" shpk	35/10kV	1,562	1,350	1,386	1,461	5,760
Hec "Selece" me fuqi 1600 kW	1.600	"Selece Energji" shpk	10kV	549	539	624	694	2,405
Hec "Kumbull- Merkurth" me fuqi 0.83 Mw	0.830	"DN & NAT Energy" shpk	6kV	257	206	99	275	838
Hec "Sasaj" me fuqi 8,6 MW	8.600	"Energo - Sas" shpk	35kV	3,317	3,239	3,437	2,978	12,972
Hec "Tervol" me fuqi 10.6 MW	10.600	"Hec i Tervoliti" shpk	35kV	4,872	5,266	4,433	6,587	21,158
Hec "Radove" me fuqi 2,5 MW	2.500	"MTC Energy" shpk	10kV	1,783	1,725	1,348	953	5,808
Hec "Gurshpat 1" me fuqi 0,84 MW,	0.840		10kV	486	705	543	661	2,396
Hec "Gurshpat 2" me fuqi 0,83 MW	0.830	"Gurshpat Energy" shpk	10kV	687	807	647	526	2,667
Hec "Bistrica 3" me fuqi 1,57 MW,	1.570	"Bistrica 3 Energy" shpk	6kV	754	961	885	879	3,479
Hec "Hurdhas 1" me fuqi 1,71MW,	1.710	"Komp Energji" shpk	6kV	1,977	1,593	1,270	1,334	6,174
Hec "Perrollaj" me fuqi 0,5 MW	0.500	"Fatlum" shpk	10kV	229	211	107	141	687
Hec "Koxheraj" me fuqi 0,62 MW	0.620	"Koxherri Energji" shpk	10kV	293	248	231	280	1,052
Hec "Kacni" me fuqi 3,87 MW	3.870	"Kisi-Bio-Energji" shpk	20kV	870	905	313	860	2,949
Hec "Lena 1" me fuqi 1,95 MW,;	1.950		35kV	-	-	-	-	-
Hec "Lena 2" me fuqi 2,3 MW	2.300	"Gama Energy" shpk	35kV	1,102	1,036	854	1,555	4,546

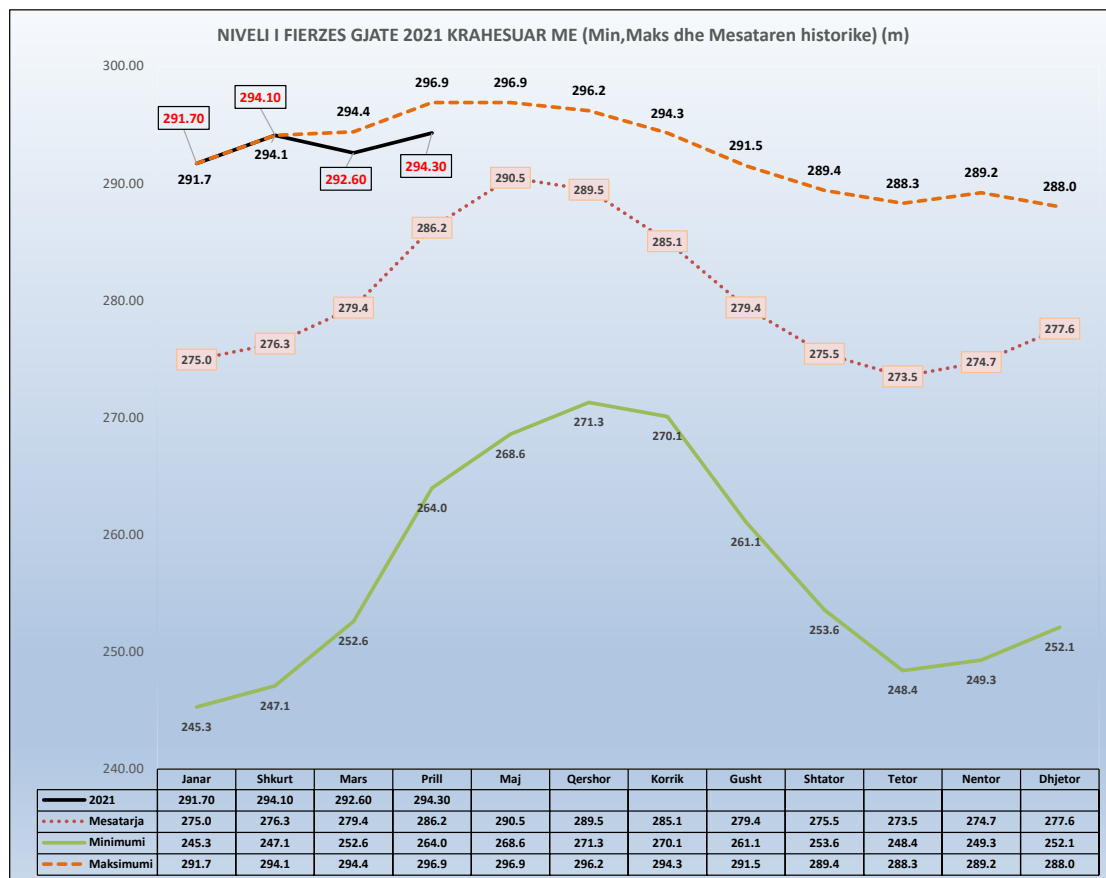
Hec "Lena 2A" me fuqi 0,25 MW	0.250		35kv						
Hec "Driza" me fuqi 3,408 MW	3.408	"Mesopotam Energy" shpk	35kv	899	894	416	300	2,509	
Hec Strelca 1,2,3 (1.504 MW, 0.325 MW, 3.52 MW)	5.349	"Strelca Energy" shpk	35kv	1,699	1,629	1,210	2,307	6,845	
Hec "Ujanik 2" me fuqi 2,5 MW	2.500	"HP Ujaniku Energy" shpk	35kv	1,352	1,173	850	989	4,364	
Hec "Nishove" me fuqi 1,36 MW	1.360	"Nishova Energy" shpk	35kv	154	-	-	-	154	
Hec "Shtika" me fuqi 1,3 MW	1.300	"Perparimi SK" shpk	10kv	665	734	483	416	2,298	
Hec "Ballenje" me fuqi 1,9 MW	1.900	"Ballenja Power Martanesh" shpk	35kv	600	599	341	864	2,405	
Hec Gavran 1	0.998	"Gavran Energy" shpk	35kv	504	597	382	667	2,150	
Hec Gavran 2	1.215	"Gavran Energy" shpk	35kv	387	479	302	603	1,771	
Hec Kasollet e Selces 1	4.000	"Xhango Energji" shpk	35kv	1,718	2,005	1,145	1,718	6,586	
Hec Holta Kabash	2.200		35kv						
Hec Holta Porocan	3.300	HEC Kabash Porocan shpk	35kv	1,593	1,771	1,906	2,777	8,047	
Hec Lusen 1	0.315	"Eurobiznes" shpk	35kv	79	104	87	133	403	
Hec Ura e Fanit	1.000	"Ayen As Energji" sha	35kv	541	510	533	523	2,107	
HEC Gorice	1.747	"THE BLUE STAR" sh.p.k	35kv	657	798	699	1,140	3,294	
HEC Kabash 1&2	5.800	"Univers Energji" shpk	35kv	1,260	1,365	630	840	4,095	
HEC "Tucep 2"	1.7	"DUKA T2" shpk	35kv	313	183	141	295	931	
Hec Dobrenje Tomorrice	2.4	DAAB Energy Group shpk	35kv	637	630	515	599	2,380	
Hec Razdoll	0.765	Hydro Vizion shpk (1 pa licens nga ERE)	35kv	247	138	169	431	985	
Hec Dragostunje	3.1	"HEC-i Dragostunje" shpk	35kv	3,151	3,314	1,854	2,942	11,261	
Hec Stebleve	3.4	"PURE ENERGY STEBLEVA" shpk	35kv	374	410	246	606	1,636	
Hec Zerec 1	0.55								
Hec Zerec 2	1.315	"EnRel Hydro" shpk	35kv	1,034	976	859	1,215	4,084	
Hec Shëngjon 1	0.651								
Hec Shëngjon 2	0.356	"EDIANI" sh.p.k.	35kv	385	424	328	380	1,517	
HEC Blaç	1.3	"BLAC ENERGY" sh.p.k	35kv	98	43	33	-	174	
HEC Qarrishtë	0.3	"IDI-2005" SHPK	35kv	135	154	119	201	609	
HEC Vendresh	0.456	"HP VENDRESH ENERGY" SHPK	35kv	148	181	143	134	606	
HEC "Antena"	1.105	"DERBI-E" shpk	35kv	627	580	319	619	2,145	
HEC "Kamenice"	0.973	HP Kamenica shpk	10	570	535	240	437	1,782	
HEC "Qytezë"	0.9	Muso hec Qytezë	10	294	341	236	338	1,210	
HEC Marjan Gura e Vesheve	0.63	Marituda Shpk	10	145	157	116	224	642	
HEC Skatinë	2.677	Skatina Hec Shpk	10	1,266	1,116	802	1,066	4,250	
HEC Kaparjel	0.2	ABV Konstruksion Shpk	10	28	14	56	62	160	
HEC Letaj	0.54	Asi-Tre Shpk	10	201	184	126	177	687	
HEC Nice	2.133	MP-HEC Shpk	35	392	534	279	427	1,632	
HEC Meshurdhe	1.8	SIMA-Com Shpk	10	1,197	1,272	907	1,041	4,418	
HEC Thanez	1.95	AFRIMI K Shpk	35	1,398	1,244	1,027	1,461	5,131	
HEC OSOJE	1.9	OSOJA HPP shpk	35	1,446	1,310	1,419	1,366	5,541	
Hec Voskopoje	1.9	FAVINA 1 shpk	35	1,322	1,327	1,005	1,031	4,685	
Hec Nderfushas	1.34	SGD Energji shpk	35	393	327	206	485	1,411	
Hec Rreshen	0.38	Nikolli Energy shpk	10	175	157	172	164	669	
Hec Gurra	0.5	Uleza Nderim shpk	6	178	167	177	162	684	
Hec Vile	1.994	Hydro Power Panariti shpk	35	939	1,201	933	963	4,036	
Hec Dukona	0.800	Dukona shpk	20	289	289	157	204	940	
Hec Prevallë	1.750	Gega-G shpk	35	1,268	1,175	1,057	1,215	4,715	
HEC Camerice	0.800	Rei Energy shpk	35	487	517	537	817	2,357	
Hec Stroj	2.000	Era Hydro shpk	35	1,465	1,486	1,511	1,499	5,961	
Hec Mivas	1.940	Elva 2001 shpk	35	423	993	1,050	1,110	3,576	
Hec Spathare	1.038	Lucente concensionare shpk	10	377	649	724	436	2,186	
Hec Miraka	0.600	Kuarci Blace shpk	10	285	332	206	207	1,029	
Hec Shegjin	2.000	Irarba Energji shpk	10	348	353	405	421	1,528	
hec Dobrunje	0.840	W.T.S. Energji shpk	10	212	222	269	320	1,023	
Hec Muras	2	Mateo& Co shpk		156	676	816	1,244	2,892	
Hec Trojet	0.9	Trojjet Energji shpl		113	436	364	468	1,380	
Hec Deni	0.85	ASI TRE shpk		380	374	225	413	1,391	
Hec Kamican	1.86	IGI 2005 shpk		-	100	691	1,277	2,068	
Hec Vardar	1.97	Gerti shpk		-	-	-	977	977	
Hec Stavec	6.5	Koka Ergi Stavec shpk		-	-	-	2,065	2,065	
	299			123,027	127,093	106,488	137,509	494,117	

PRODHIMI GJATE VITIT 2021 NGA CENTRALET FOTOVOLTAIKE TË LIDHURA NE RRJETIN E SHPERNDARJES (MWh)								
CENTRAL FOTOVOLTAIK	MW	SUBJEKTI	LIDHJA	JANAR	SHKURT	MARS	PRILL	4-M 2021
UKKO (pa sistemuarne sistem)	1	"UKKO"sha (Ujssjell.Kanal.Korce)						
Seman – 2	2	"SEMAN2SUN" sh.p.k	35 kv	166	241	365	368	1,141
Topojë	2	"SONNE" sh.p.k	35 kv	165	240	368	368	1,141
Topojë 2	2	"AED SOLAR" sh.p.k	35 kv	165	239	430	304	1,138
Topojë (Sheq Marinas)	2	"AGE SUNPOWER" sh.p.k	35 kv	164	239	365	367	1,135
Topojë (Sheq Marinas) 2	2	"SEMAN SUNPOWER" sh.p.k	35 kv	167	243	370	371	1,151
SemanIsolar	2	"SEMANISOLAR " sh.p.k	35 kv	174	245	366	359	1,145
FV Lugano	2	ES 2019 sh.p.k	35 kv	187	271	414	385	1,258
FV SMART WATT	2	SMART WATT sh.p.k	35 kv	188	271	411	383	1,254
Tren Bilisht	2	"RTS " sh.p.k	35 kv	164	259	328	333	1,084
Plug, Lushnje	2	"AEE" sh.p.k	10 kv	192	239	362	471	1,265
	21			1,734	2,488	3,779	3,708	11,709

Kapaciteti Instaluar i gjithe prodhuesve **2,570** MW

	NIVELI I FIERZES 1991-2021											
	Janar	Shkurt	Mars	Prill	Maj	Qershor	Korrik	Gusht	Shtator	Tetor	Nentor	Dhjetor
1991	254.4	260.8	268.6	279.9	293.4	296.1	294.0	291.5	289.4	288.3	288.8	285.1
1992	278.0	274.1	268.0	278.8	281.0	279.6	275.2	268.7	263.9	271.4	281.9	280.6
1993	275.2	265.3	264.7	278.5	280.5	277.3	271.0	261.1	253.6	249.9	255.6	270.2
1994	254.4	260.8	268.6	279.9	293.4	296.1	294.0	291.5	289.4	288.3	288.8	285.1
1995	253.8	260.3	262.5	275.3	289.0	288.7	284.5	282.2	288.2	283.8	279.9	287.5
1996	287.1	288.7	286.5	294.7	295.8	293.1	287.6	282.2	285.1	284.3	289.2	291.3
1997	289.4	284.5	281.7	285.2	294.1	292.0	287.0	280.0	272.9	272.4	270.8	277.2
1998	273.7	270.0	265.2	278.9	288.1	287.4	281.8	277.6	276.0	277.1	279.0	277.1
1999	272.7	275.6	281.5	290.5	295.9	293.3	288.3	279.5	271.0	257.6	263.6	276.9
2000	276.4	276.7	276.8	286.9	286.6	280.1	273.5	267.5	261.6	248.4	249.3	252.1
2001	253.6	258.2	275.1	282.9	287.6	283.8	273.7	271.1	269.2	263.6	263.2	252.1
2002	245.3	247.1	252.6	264.0	268.6	271.3	270.1	267.8	274.3	286.1	285.3	284.0
2003	291.1	289.5	286.3	287.0	292.3	290.3	285.9	280.8	276.0	282.6	285.6	283.3
2004	284.7	290.8	293.4	296.0	296.2	296.2	293.1	286.3	281.1	280.0	286.1	288.0
2005	281.2	281.5	293.3	296.1	295.6	294.1	286.7	277.2	266.5	256.9	253.6	279.0
2006	283.5	288.6	294.4	295.9	296.5	295.9	293.8	290.2	285.3	278.7	266.2	256.2
2007	256.1	263.7	272.0	276.8	276.8	274.8	268.5	263.6	261.8	261.1	275.8	282.1
2008	285.1	289.7	290.9	295.5	295.3	295.7	294.3	288.6	283.9	280.9	285.2	286.5
2009	283.6	281.8	283.4	292.5	293.7	292.4	288.0	281.2	276.2	271.6	266.3	280.1
2010	290.1	289.2	293.9	296.0	296.3	294.4	291.8	288.6	284.9	285.2	284.3	287.5
2011	281.6	274.4	275.0	276.6	281.0	286.1	284.7	279.0	273.9	268.2	261.6	264.5
2012	265.8	267.7	262.0	280.2	293.4	294.4	288.4	280.4	261.4	261.6	269.0	276.6
2013	278.3	281.5	294.8	296.9	296.9	294.2	289.7	283.6	280.8	281.4	282.5	276.1
2014	275.1	277.5	274.6	285.3	292.9	294.9	291.7	286.8	285.5	285.0	284.8	286.3
2015	288.7	289.4	292.2	296.3	296.1	293.3	287.5	280.1	272.1	275.4	278.9	275.9
2016	289.9	292.4	291.8	296.5	296.2	295.6	290.5	285.4	283.3	288.4	288.9	281.6
2017	271.5	277.7	280.9	278.7	281.6	272.4	270.2	268.0	271.0	264.6	269.6	289.9
2018	289.7	292.0	295.0	296.5	296.4	296.0	294.0	287.5	277.9	270.2	266.5	267.3
2019	267.3	268.2	272.7	279.9	289.9	292.7	287.6	278.5	274.2	268.6	273.2	275.6
2020	271.62	271.98	283.50	288.55	293.6	291.7	284.6	276.5	273.5	274.1	268.7	272.7
2021	291.70	294.10	292.60	294.30								

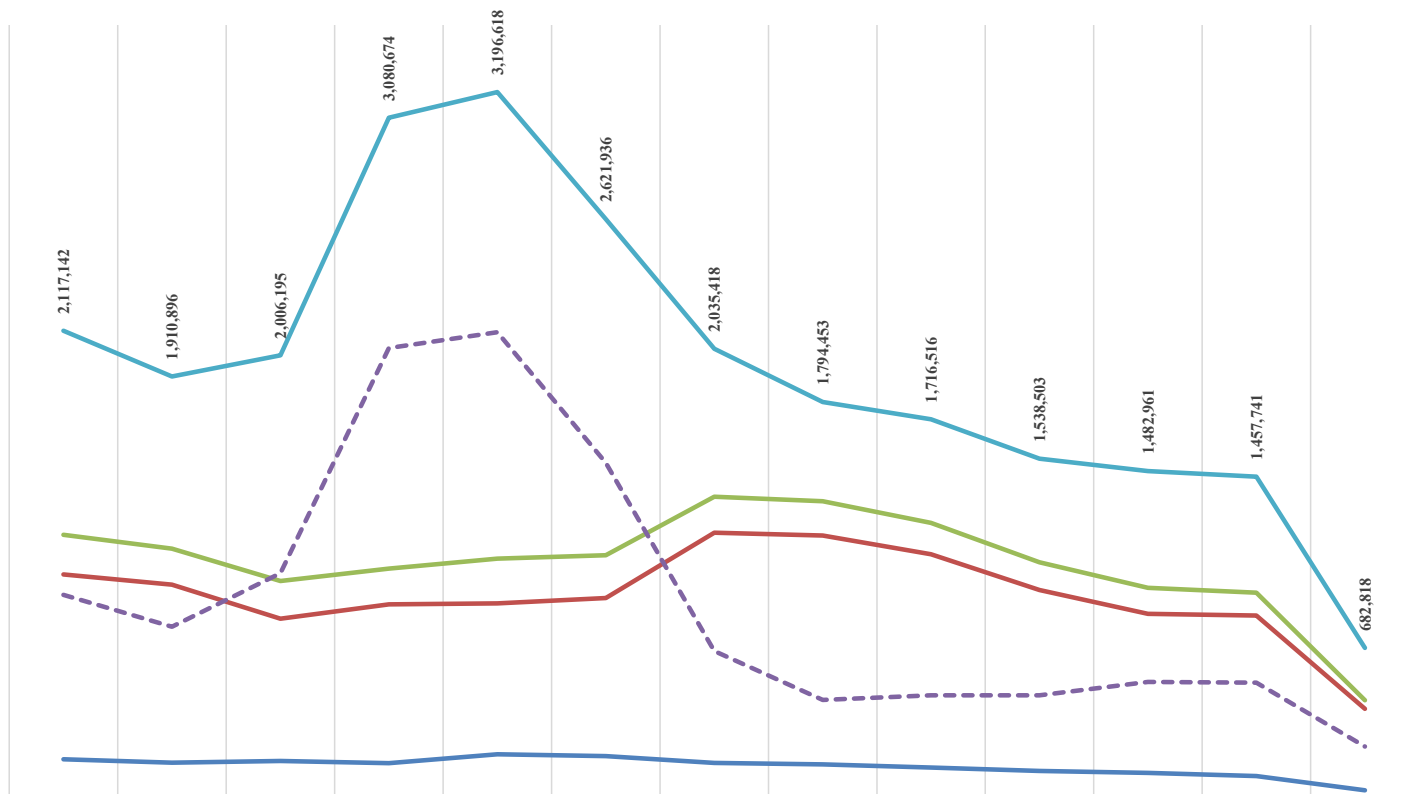
2021	Janar	Shkurt	Mars	Prill	Maj	Qershor	Korrik	Gusht	Shtator	Tetor	Nentor	Dhjetor
Mesatarja	275.0	276.3	279.4	286.2	290.5	289.5	285.1	279.4	275.5	273.5	274.7	277.6
Minimumi	245.3	247.1	252.6	264.0	268.6	271.3	270.1	261.1	253.6	248.4	249.3	252.1
Maksimumi	291.7	294.1	294.4	296.9	296.9	296.2	294.3	291.5	289.4	288.3	289.2	288.0



HUMBJET NE RRJETIN E SHPERNDARJES 2009-2021 (MWh)

	2009	2010	2011	2012	2013	2014	2015	2016	2017	2018	2019	2020	2021 Mujori	(4)
HUMBJE TEKNIKE NE TL (N/ST)	178,738	163,546	170,937	161,831	201,684	193,208	162,725	155,629	141,707	125,974	117,739	103,729	38,815	
HUMBJE TEKNIKE NE ZONAT E OSSH	1,015,450	968,535	814,826	879,616	884,360	908,416	1,203,793	1,190,872	1,106,007	944,587	836,561	828,906	407,271	
TOTALI I HUMBJEVE TEKNIKE OSSH	1,194,188	1,132,081	985,763	1,041,447	1,086,044	1,101,624	1,366,518	1,346,501	1,247,714	1,070,560	954,300	932,635	446,086	
HUMBJE JOTOKNIKE OSSH	922,954	778,815	1,020,432	2,039,227	2,110,575	1,520,312	668,900	447,952	468,802	467,943	528,661	525,106	236,732	
TOTALI I HUMBJEVE OSSH	2,117,142	1,910,896	2,006,195	3,080,674	3,196,618	2,621,936	2,035,418	1,794,453	1,716,516	1,538,503	1,482,961	1,457,741	682,818	

HUMBJET NE RRJETIN E SHPERNDARJES 2009-2021 (MWh)

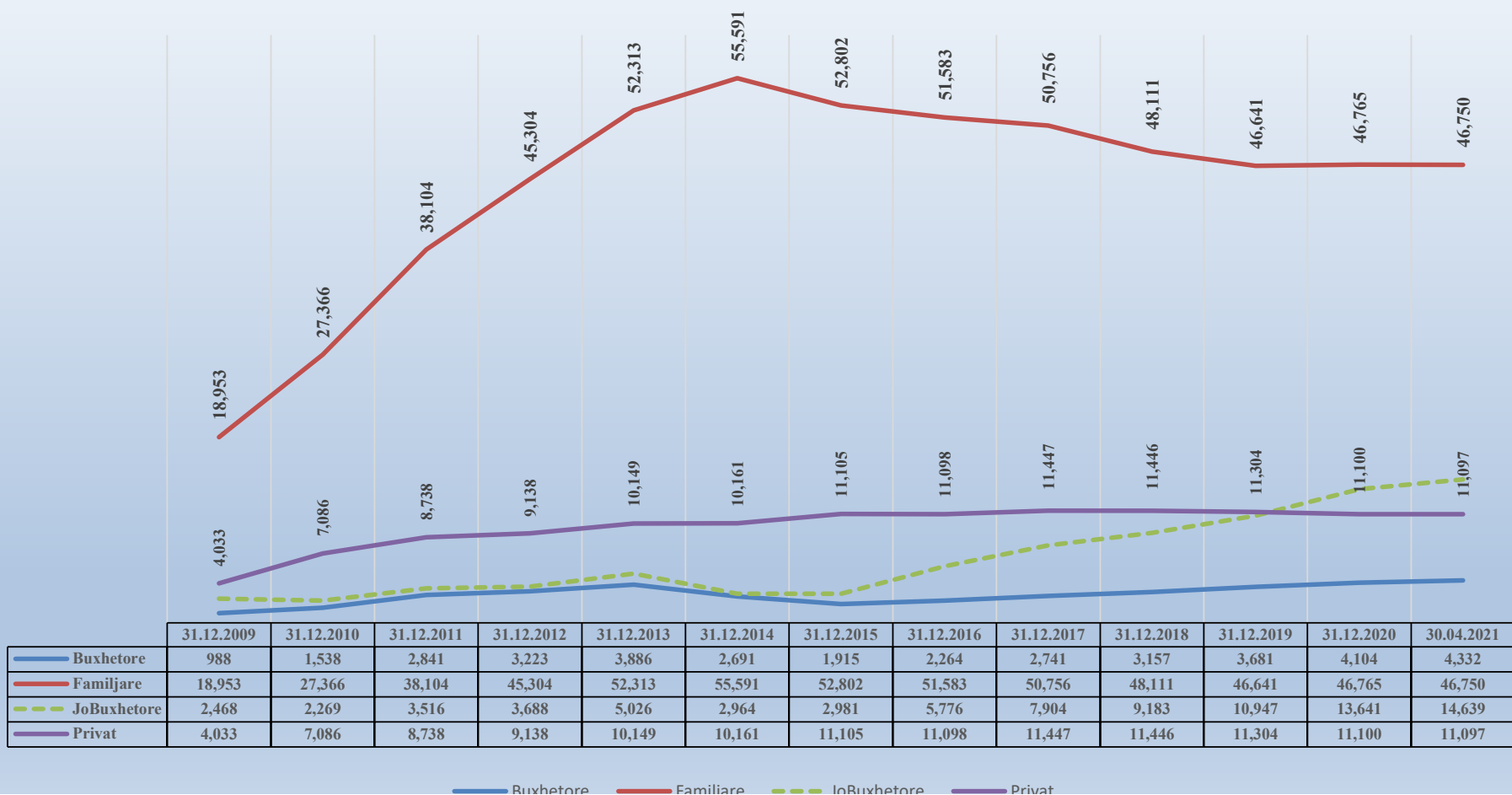


	2009	2010	2011	2012	2013	2014	2015	2016	2017	2018	2019	2020	2021 Mujori	(4)
HUMBJE TEKNIKE NE TL (N/ST)	178,738	163,546	170,937	161,831	201,684	193,208	162,725	155,629	141,707	125,974	117,739	103,729	38,815	
HUMBJE TEKNIKE NE ZONAT E OSSH	1,015,450	968,535	814,826	879,616	884,360	908,416	1,203,793	1,190,872	1,106,007	944,587	836,561	828,906	407,271	
TOTALI I HUMBJEVE TEKNIKE OSSH	1,194,188	1,132,081	985,763	1,041,447	1,086,044	1,101,624	1,366,518	1,346,501	1,247,714	1,070,560	954,300	932,635	446,086	
HUMBJE JOTOKNIKE OSSH	922,954	778,815	1,020,432	2,039,227	2,110,575	1,520,312	668,900	447,952	468,802	467,943	528,661	525,106	236,732	
TOTALI I HUMBJEVE OSSH	2,117,142	1,910,896	2,006,195	3,080,674	3,196,618	2,621,936	2,035,418	1,794,453	1,716,516	1,538,503	1,482,961	1,457,741	682,818	

ECURIA E GJENDJES DEBITORE NDAJ OSHEE 31 DHJETOR 2009 - 30 Prill 2021 (000 000 LEKË)

	31.12.2009	31.12.2010	31.12.2011	31.12.2012	31.12.2013	31.12.2014	31.12.2015	31.12.2016	31.12.2017	31.12.2018	31.12.2019	31.12.2020	30.04.2021
Buxhetore	988	1,538	2,841	3,223	3,886	2,691	1,915	2,264	2,741	3,157	3,681	4,104	4,332
Familjare	18,953	27,366	38,104	45,304	52,313	55,591	52,802	51,583	50,756	48,111	46,641	46,765	46,750
JoBuxhetore	2,468	2,269	3,516	3,688	5,026	2,964	2,981	5,776	7,904	9,183	10,947	13,641	14,639
Privat	4,033	7,086	8,738	9,138	10,149	10,161	11,105	11,098	11,447	11,446	11,304	11,100	11,097
Total	26,442	38,260	53,198	61,353	71,374	71,406	68,803	70,720	72,849	71,897	72,574	75,610	76,819

**ECURIA E GJENDJES DEBITORE NDAJ OPERATORIT TE SHPERNDARJES
31 DHJETOR 2009 - 30 PRILL 2021 SIPAS KLIENTËVE
(000 000 LEKË)**



buxnetore

familjare

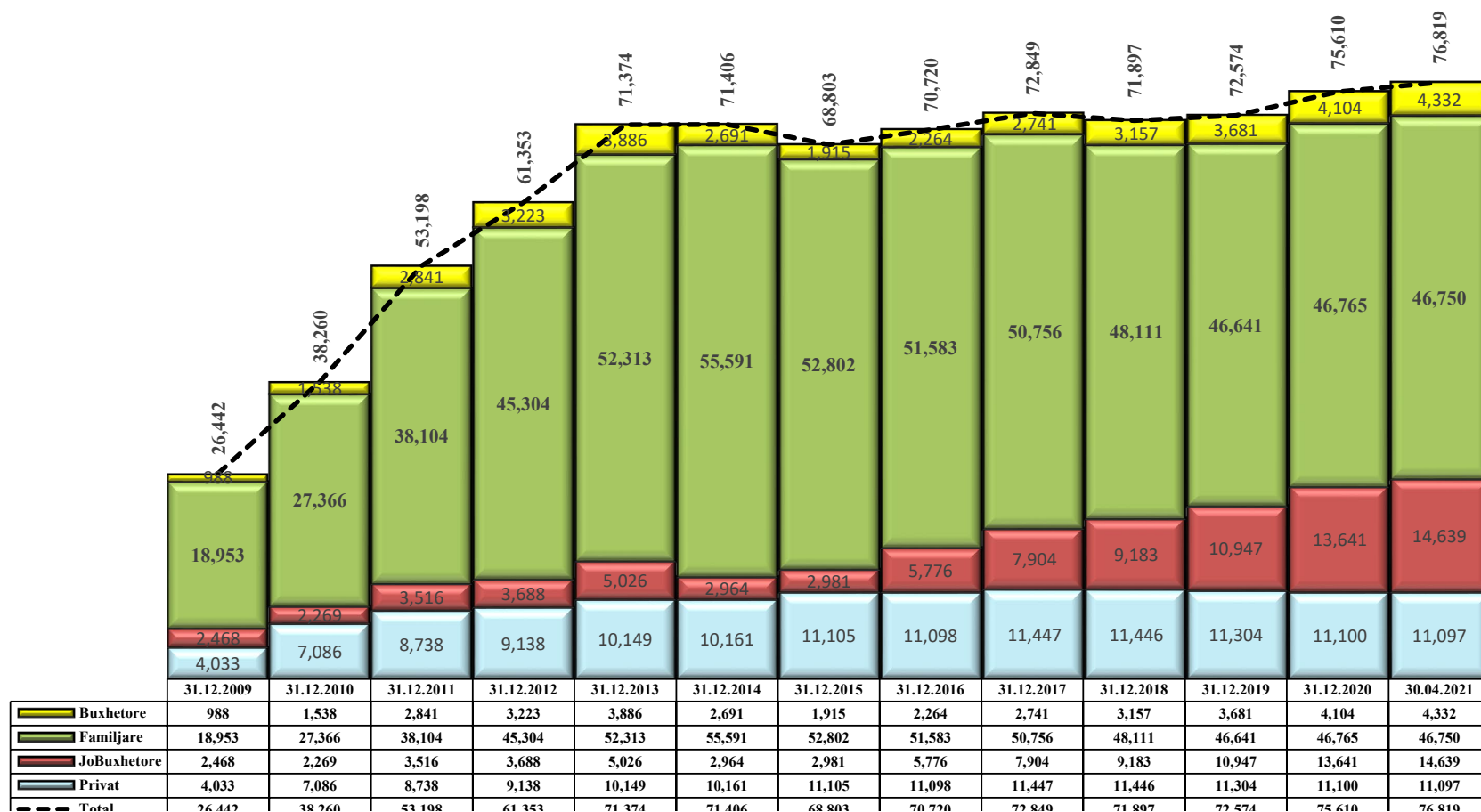
jobuxnetore

Privat

Burimi OSHEE Group sha

	31.12.2009	31.12.2010	31.12.2011	31.12.2012	31.12.2013	31.12.2014	31.12.2015	31.12.2016	31.12.2017	31.12.2018	31.12.2019	31.12.2020	30.04.2021
Privat	4,033	7,086	8,738	9,138	10,149	10,161	11,105	11,098	11,447	11,446	11,304	11,100	11,097
JoBuxhetore	2,468	2,269	3,516	3,688	5,026	2,964	2,981	5,776	7,904	9,183	10,947	13,641	14,639
Familjare	18,953	27,366	38,104	45,304	52,313	55,591	52,802	51,583	50,756	48,111	46,641	46,765	46,750
Buxhetore	988	1,538	2,841	3,223	3,886	2,691	1,915	2,264	2,741	3,157	3,681	4,104	4,332
Total	26,442	38,260	53,198	61,353	71,374	71,406	68,803	70,720	72,849	71,897	72,574	75,610	76,819

**ECURIA E GJENDJES DEBITORE NDAJ OPERATORIT TE SHPERNDARJES
31 DHJETOR 2009 - 30 PRILL 2021 SIPAS KLIENTËVE
(000 000 LEKË)**



--- Total	20,442	38,200	55,198	61,555	71,574	71,400	68,805	70,720	72,849	71,897	72,574	75,010	76,819
-----------	--------	--------	--------	--------	--------	--------	--------	--------	--------	--------	--------	--------	--------

PERFORMANCA E OPERATOTRIT TE SHPERNDARJES 2009-2021 (%)

NIVELI I HUMBJEVE (%) 2009-2020												
	Janar	Shkurt	Mars	Prill	Maj	Qershor	Korrik	Gusht	Shtator	Tetor	Nentor	Dhjetor
2009	40.75	37.05	38.05	32.93	33.44	30.75	32.60	30.20	25.34	30.67	33.44	36.89
2010	38.62	35.41	36.90	31.37	35.17	31.45	26.94	29.69	21.47	20.61	22.16	29.05
2011	55.55	38.00	36.95	23.11	24.85	21.29	21.88	19.41	22.95	25.15	32.20	35.70
2012	35.72	59.16	55.23	45.41	38.87	39.77	45.51	45.51	42.09	35.53	41.89	49.32
2013	51.12	48.71	48.29	39.66	39.52	40.33	43.33	38.50	35.08	45.98	48.08	53.04
2014	47.00	42.14	42.78	35.69	36.85	34.10	36.59	36.36	31.67	34.52	32.88	37.54
2015	36.68	31.82	32.88	30.54	31.24	28.60	30.62	29.29	25.30	29.92	30.82	34.50
2016	34.69	29.00	29.93	26.07	26.97	24.35	25.97	25.15	22.12	27.11	29.30	30.99
2017	33.50	27.63	28.66	25.81	25.88	28.31	24.69	23.29	19.79	23.76	23.55	27.90
2018	30.65	24.91	27.22	23.33	23.03	20.76	21.46	20.77	19.32	21.53	22.73	26.70
2019	29.25	23.21	26.5	21.36	22.10	19.92	20.42	19.81	17.54	20.40	21.58	24.76
2020	28.22	21.61	28.36	17.39	19.10	18.65	19.69	18.87	16.80	21.21	22.79	20.49
2021	27.87	20.1	25.92	21.08								

26.41

23.9

21.79

21.48

23.91

Niveli i Arketimeve (%) 2009-2020												
	Janar	Shkurt	Mars	Prill	Maj	Qershor	Korrik	Gusht	Shtator	Tetor	Nentor	Dhjetor
2009	69.32	85.95	74.38	86.58	86.31	76.37	75.40	72.46	83.20	80.82	61.77	70.01
2010	55.37	66.28	86.63	89.46	86.70	79.42	74.84	124.98	84.20	70.81	56.15	66.48
2011	67.26	57.61	87.66	71.61	96.73	73.00	65.00	81.00	66.00	63.86	51.47	87.30
2012	59.80	79.20	78.50	78.00	94.70	83.50	91.60	102.90	74.00	98.00	72.60	78.00
2013	61.40	63.70	86.20	80.70	79.10	69.60	87.90	90.10	78.50	84.30	89.00	102.00
2014	84.90	77.10	85.90	85.50	81.90	80.20	86.70	83.60	102.60	101.00	101.90	141.00
2015	112.70	120.50	103.70	86.60	95.70	97.10	98.40	104.70	95.30	100.30	92.20	100.70
2016	92.10	87.00	95.60	90.10	99.10	92.00	94.20	96.70	91.50	96.70	90.30	96.70
2017	85.20	87.60	105.70	94.50	105.70	91.80	104.80	97.40	94.60	103.80	92.70	100.10
2018	96.39	95.69	105.82	98.92	111.64	100.16	105.00	102.12	93.03	108.76	96.24	108.94
2019	90.7	92.6	99.8	102.4	102.50	94.00	104.40	99.30	93.90	104.70	89.60	110.70
2020	91.4	91.6	77.5	106.8	101.80	102.20	96.80	95.30	96.60	101.10	91.50	101.80
2021	86.4	88.9	102.1	91								

96.6

101.6

98.4

95.8

92.0

Efektiviteti i shitjeve (%) 2009-2020												
	Janar	Shkurt	Mars	Prill	Maj	Qershor	Korrik	Gusht	Shtator	Tetor	Nentor	Dhjetor
2009	41.1%	54.1%	46.1%	58.1%	57.4%	52.9%	50.8%	50.6%	62.1%	56.0%	41.1%	44.2%
2010	34.0%	42.8%	54.7%	61.4%	56.2%	54.4%	54.7%	87.9%	66.1%	56.2%	43.7%	47.2%
2011	29.9%	35.7%	55.3%	55.1%	72.7%	57.5%	50.8%	65.3%	50.9%	47.8%	34.9%	56.1%
2012	38.4%	32.3%	35.1%	42.6%	57.9%	50.3%	49.9%	56.1%	42.9%	63.2%	42.2%	39.5%
2013	30.0%	32.7%	44.6%	48.7%	47.8%	41.5%	49.8%	55.4%	51.0%	45.5%	46.2%	47.9%
2014	45.0%	44.6%	49.2%	55.0%	51.7%	52.9%	55.0%	53.2%	70.1%	66.1%	68.4%	88.1%
2015	71.4%	82.2%	69.6%	60.2%	65.8%	69.3%	68.3%	74.0%	71.2%	70.3%	63.8%	66.0%
2016	60.2%	61.8%	67.0%	66.6%	72.4%	69.6%	69.7%	72.4%	71.3%	70.5%	63.8%	66.7%
2017	56.7%	63.4%	75.4%	70.1%	78.3%	65.8%	78.9%	74.7%	75.9%	79.1%	70.9%	72.2%
2018	66.8%	71.9%	77.0%	75.8%	85.9%	79.4%	82.5%	80.9%	75.1%	85.3%	74.4%	79.9%
2019	64.2%	71.1%	73.4%	80.5%	79.8%	75.3%	83.1%	79.6%	77.4%	83.3%	70.3%	83.3%

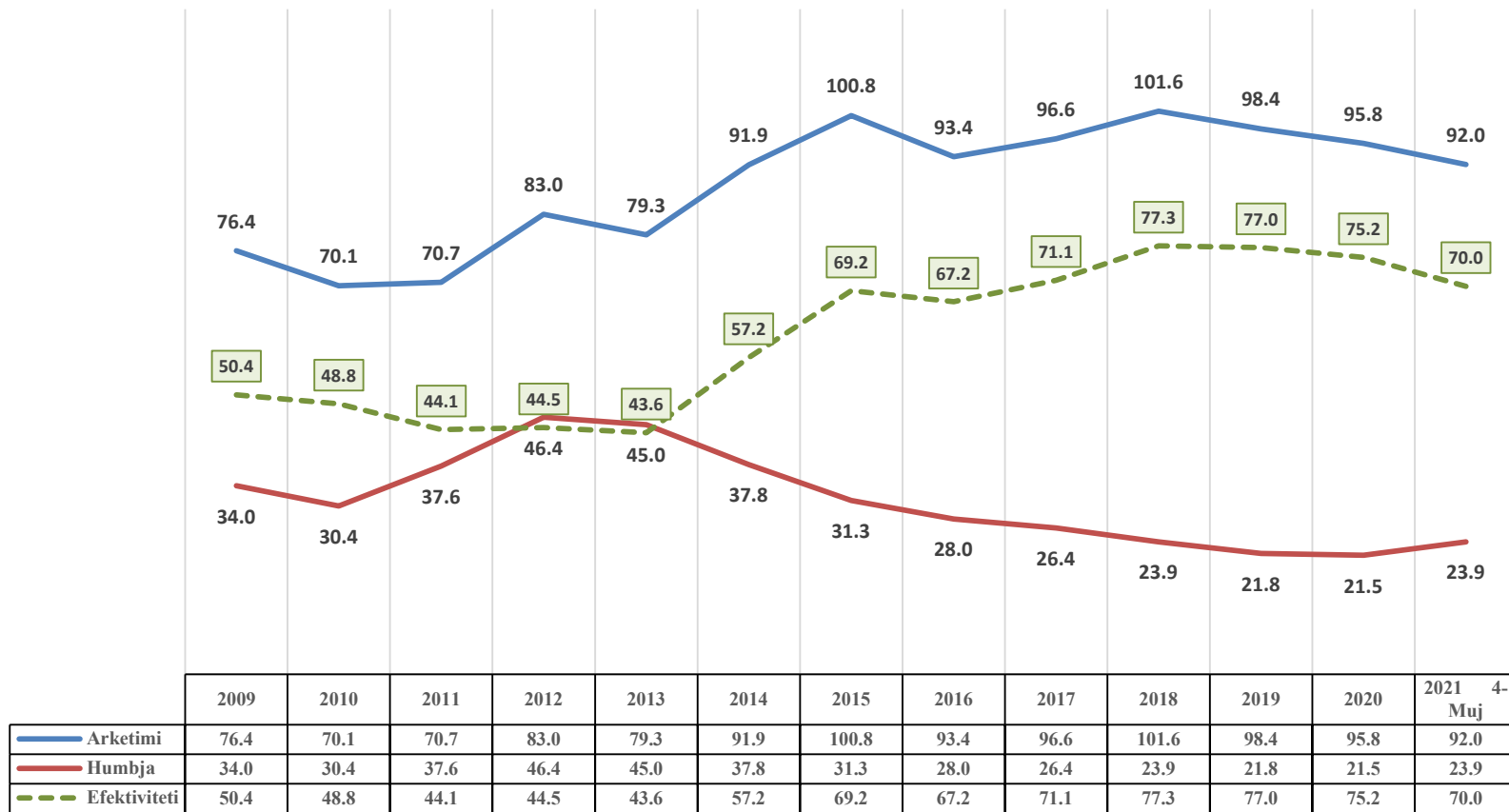
71.1%

77.3%

77.0%

	2009	2010	2011	2012	2013	2014	2015	2016	2017	2018	2019	2020	2021 4-Muj
Arketimi	76.4	70.1	70.7	83.0	79.3	91.9	100.8	93.4	96.6	101.6	98.4	95.8	92.0
Humbja	34.0	30.4	37.6	46.4	45.0	37.8	31.3	28.0	26.4	23.9	21.8	21.5	23.9
Efektiviteti	50.4	48.8	44.1	44.5	43.6	57.2	69.2	67.2	71.1	77.3	77.0	75.2	70.0

Efektiviteti i shitjeve ne Sistemin e Shperndarjes (%)
2009-2021



Devijimet ne Programin e Interkoneksionit 2021 (MWh)

Minus = Hyrje

Plus = Dalje

Data	Janar	Shkurt	Mars	Prill	Maj	Qershor	Korrik	Gusht	Shtator	Tetor	Nentor	Dhjetor	2021
1	55	2,277	178	2,512									5,023
2	22	2,036	270	2,330									4,658
3	84	2,226	-10	2,303									4,603
4	122	577	28	731									1,458
5	-569	769	45	251									496
6	41	21	215	282									559
7	-6	555	127	683									1,359
8	254	741	129	1,132									2,256
9	594	59	206	868									1,727
10	537	436	110	1,093									2,175
11	21	420	159	611									1,211
12	194	1,141	158	1,505									2,997
13	-1,630	-480	122	-1,975									-3,963
14	-1,528	-245	197	-1,563									-3,140
15	433	445	309	1,202									2,389
16	265	377	307	965									1,913
17	-288	563	142	434									852
18	693	225	129	1,065									2,112
19	831	196	179	1,224									2,430
20	-178	35	171	48									76
21	781	46	201	1,048									2,075
22	981	-14	123	1,112									2,202
23	487	51	-85	477									930
24	208	164	290	687									1,349
25	1,869	79	295	2,269									4,512
26	1,588	265	211	2,090									4,154
27	1,946	220	282	2,476									4,924
28	602	293	180	1,103									2,179
29	119	0	369	517									1,006
30	1,166	0	260	1,455									2,881
31	2,145	0	267	2,442									4,854
Total	11,839	13,479	5,562	30,880									61,760

Burimi OST sha

Tabela e Faturave te detyrime midis Furnizuesve te Kualifikuar dhe OST Sha per vitin 2021

DISBALANCAT										
Pale Pergjegjese Balancuese	JANAR		SHKURT		MARS		PRILL		Total 2021	
	Dis. Negative [MWh]	Dis. Pozitive [MWh]	Dis. Negative [MWh]	Dis. Pozitive [MWh]	Dis. Negative [MWh]	Dis. Pozitive [MWh]	Dis. Negative [MWh]	Dis. Pozitive [MWh]	Dis. Negative [MWh]	Dis. Pozitive [MWh]
KURUM INTERNATIONAL	1,917	773	1,035	3,292	446	445	1,035	695	4,432	5,205
DEVOLL HP	48	61	33	59	140	79	62	97	284	296
ENERGIA GAS & POWER ALBANIA	1,237	664	775	128	1,438	98	1,305	84	4,755	975
AYEN AS ENERGJI	1,326	335	552	198	123	95	80	128	2,082	756
GSA	627	1,648	195	742	1,198	751	1,034	1,016	3,055	4,158
GEN-1				2,181					-	2,181
Albanian Energy Supplier AES	1,906	52	2,850	151	2,431	141	1,198	160	8,385	504
Energji ASHTA	526	348	207	245	694	534			1,427	1,127
KESH (PPB)	4	107	5,167	69	2	97			5,173	273
KESH GRUP BALANCIMI (KESH & ASHTA)							5,897	2,444	5,897	2,444
Furnizuesi I Tregut tē Lirē FTL (OSHEE Grup)	8,442	45,100	6,902	30,386	7,862	32,239	7,671	29,002	30,877	136,727
EZ-5 ENERGY	365	98	168	187	237	21	82	93	851	398
BYLLIS Tec Ballsh (Pa kontrate Furnizimi)	73		62		68		62	-	265	-
ENER TRADE sh.p.k.		3		72					-	75
KOSTT	6,990	6,725	6,884	4,750	4,179	6,915	1,391	11,620	19,444	30,010
OST - HUMBJET	7,477	826	7,581	409	1,015	4,124	10,082	-	26,156	5,359
Disbalancat mujore [MWh]		25,803.74		10,458.23		25,705.92		15,439.29		77,407.18
Ofruesi i Sherbimit te Balancimit	Ulje Gjenerimi [MWh]	Rritje Gjenerimi [MWh]	Ulje Gjenerimi [MWh]	Rritje Gjenerimi [MWh]	Ulje Gjenerimi [MWh]	Rritje Gjenerimi [MWh]	Ulje Gjenerimi [MWh]	Rritje Gjenerimi [MWh]	Ulje Gjenerimi [MWh]	Rritje Gjenerimi [MWh]
KESH sh.a. OSHB	39,180	20,968	25,929	8,493	33,615	8,926	48,133	53,776	146,857	92,164
DEVOLL HP OSHB							401	85	401	85
Energji Balancuese mujore [MWh]		(18,211)		(17,436)		(24,689)		5,327		(55,009)

Regjistri Pjesmarresve te Tregut (viti 2021) 4-mujori		PRODHUES		P
		TREGTUES		T
		FURNIZUES		F
		FURNIZUES I SHËRBIMIT UNIVERSAL		FSHU
		SHPERNDARJE		SH
Nr	Emri i Subjektit	EIC Code	data e regjistrimit	Roli ne TEE
1	Albanian Energy Supplier	54X-AEG-02-1603G	26.05.2015	T; F
2	AXPO Albania	23X--150330-AA-K	28.1.2020	T; F
3	Ayen AS Energji	23X--150416-A—N	17.12.2014	P; T; F
4	Ayen Energy Trading	23X--140426-AY-W	04.05.2014	T; F
6	Devoll Hydropower	23X--150409-DHP5	11.06.2015	T; F
8	Energji Ashta	54X-HECASHTA-059	25.05.2012	P
9	Energy Supply-AL	34X-0000000017-C	15.05.2013	T; F
11	GEN-I Tirana	23X---120709GEN0	31.01.2011	T; F
13	Green Energy Trading Albania	23X--150702GE--3	01.07.2015	T
14	Grupi Sistemeve Automatike	22XGSA-----N	09.05.2011	T; F
15	Korporata Elektroenergjitike Shqiptare	23X--130918APC-M	25.04.2011	P; T
16	KURUM International	23X--131115KI--1	17.12.2013	P; T; F
17	NOA Energy Trade	23X--150630-NE-6	10.03.2015	T; F
18	Operatori i Sistemit të Shpërndarjes - OSSH sh.a.	54X-10101FT022OP	19.02.2020	SH
19	Stravaj Energy	54X-STRAVAJ-E086	25.04.2014	P; T
20	WENERG	54X-WENERG---10E	10.06.2015	P
22	Energy Market Albania	54X-ENMARKETAL99	23.03.2017	TF
23	Grid Energy	54X-GRID-ENERGYR	05.04.2017	T; F
24	Energy Financing Team Tirana	54X-EFT-TIRANA-V	24.08.2017	T; F
25	Alpiq Energy Albania	23X--141204AEA-T	29.04.2011	T; F
26	URADRIN	54X-100ID101218J	10.08.2018	F
27	Energia Gas and Power Albania shpk	23x-150309-LT-Y	22.10.2018	T; F
28	RENRGY Trading Group	54X-10IRN102618R	12.11.2018	T,F
29	Ener Trade shpk	54X-10 IET091118	21.12.2018	T; F
30	Power and Gas Operations	54X-10IPG2307196	23.07.2019	T
31	ENSCO Trading (Albania) sh.p.k	54X-110IESA1019G	02.12.2019	T
32	KESH sh.a	23X--130918APC-M	16.12.2019	F
33	Furnizuesi i Tregut të Lirë - FTL sh.a.	54X-10101FT0220P	19.02.2020	T; F
34	Furnizuesi i Shërbimit Universal - FSHU sh.a.	54X-0101IFSH022Q	19.02.2020	F
35	EZ-5 Energy shpk	54X-11LKE250319U	25.03.2019	T;F
35	Hec Arsti shpk	54X--101H11A-IJ	27.03.2021	p

Transaksionet e energjise elektrike te Pjesemarrse te Tregut ne [MWh] per 2021

Nr.	Subjekti	Lloji transaksionit	Janar	Shkurt	Mars	Prill	Total [MWh]		
1	DEVOLLI HP	Shkenbime Cross-Border	AL-GR Greece - IN	-2,896	-1,169	-2,097	-2,625	-8,787	
			AL-KS Kosovo - IN	-2	-227	-1,497	-1,271	-2,997	
			AL-ME Monte Negro - IN	-2,009	-818	-3,121	-4,937	-10,885	
			Total IN	-4,907	-2,214	-6,715	-8,833	-22,669	
			AL-GR Greece - OUT	15,229	22,414	25,065	60,804	123,512	
			AL-KS Kosovo - OUT	2	11,429	8,255	1,217	20,903	
		AL-ME Monte Negro - OUT	58,299	90,292	64,996	1,217	214,804		
		Total OUT	73,530	124,135	98,316	63,238	359,219		
		Prodhim Devolli HP	73,144	121,374	91,601	69,481	355,600		
		Total Prodhim	73,144	121,374	91,601	69,481	355,600		
		Transaksionet e brendshme	Shitje FTL					0	
			Shitje GEN-I	69				69	
			Blerje GEN-I	-756	-547			-1,303	
			Shitje GSA					0	
Shitje KESH						0			
Shitje OST	5,208					5,208			
Total transaksione	4,521	-547	0	0	3,974				
2	AYEN Energy Trading	Shkenbime Cross-Border	AL-GR Greece - IN	-421	-305	-345	-103	-1,174	
			AL-KS Kosovo - IN	0	0	-12	0	-12	
			AL-ME Monte Negro - IN	-598	-1,061	-806	-385	-2,850	
			Total IN	-1,019	-1,366	-1,163	-488	-4,036	
			AL-GR Greece - OUT	699	825	1,693	3,569	6,786	
			AL-KS Kosovo - OUT	0	144	0	0	144	
		AL-ME Monte Negro - OUT	4,942	11,847	11,419	928	29,136		
		Total OUT	5,641	12,816	13,112	4,497	36,066		
		Transaksionet e brendshme	Blerje AES					0	
			Blerje Danske Commodities	-15	-6			-21	
			Shitje ENER TRADE	6,114	5,783	1,557	1,440	14,894	
			Shitje GEN-I	6,247		7,930	14,990	29,167	
			Blerje GEN-I	-80	-5		-5	-90	
			Shitje GETA					0	
			Shitje EFT TRN					0	
			Blerje AYEN AS Energi	-16,101	-13,863	-8,129	-9,290	-47,383	
			Shitje AYEN AS Energi	1,793	539	9,442	2,975	14,749	
			Shitje GRID Energy					0	
			Blerje KESH	-2,728	-93	-14,560	-5,089	-22,440	
			Blerje ENER TRADE	-1,273	-3,805	-8,189	-4,535	-17,802	
			Shitje KURUM					0	
Shitje Power and Gas Operation						0			
Shitje FTL						0			
Blerje FTL				-4,525	-4,525				
Shitje OST	1,421				1,421				
Total transaksione	-4,622	-11,450	-11,949	-4,809	-32,030				
3	AYEN AS Energi	Shkenbime Cross-Border	AL-GR Greece - IN	0	0	0	-447	-447	
			AL-KS Kosovo - IN	0	0	-61	0	-61	
			AL-ME Monte Negro - IN	-1,269	-1,944	-1,561	0	-4,774	
			Total IN	-1,269	-1,944	-1,622	-447	-5,282	
			AL-GR Greece - OUT	1,745	14,652	2,597	27,590	46,584	
			AL-KS Kosovo - OUT	34,374	7,959	16,129	2,643	61,105	
		AL-ME Monte Negro - OUT	17,897	20,075	23,364	2,886	64,222		
		Total OUT	54,016	42,686	42,090	33,119	171,911		
		Prodhim	68,160.7	56,189.8	41,753.1	41,111.1	207,214.7		
		Total Prodhim	68,160.7	56,189.8	41,753.1	41,111.1	207,214.7		
		Transaksionet e brendshme	Shitje Konsumatoreve te Kualifikuar					0	
			Shitje EZ-5 Energy	1,105.7	2,123.8	2,598.1	2,124.1	7,952	
			Shitje OST					0	
			Shitje AYEN Energy Trading	16,101.0	13,863.0	8,129	9,290	47,383	
Blerje AYEN Energy Trading	-1,793		-539	-9,442	-2,975	-14,749			
Total transaksione	15,413.7		15,447.8	1,285.1	8,439.1	40,586			
4	ENERGJI ASHTA		Shkenbime Cross-Border	AL-GR Greece - IN					0
				AL-KS Kosovo - IN					0
		AL-ME Monte Negro - IN						0	
		Total IN		0	0	0	0	0	
		AL-GR Greece - OUT						0	
		AL-KS Kosovo - OUT						0	
AL-ME Monte Negro - OUT					0				
Total OUT	0	0	0	0	0				
Prodhim	36,453	33,440	31,880	28,999	130,772				
Total Prodhim	36,453	33,440	31,880	28,999	130,772				
Transaksionet e brendshme	36,453	33,440	31,880	28,999	130,772				
Total transaksione	36,453	33,440	31,880	28,999	130,772				
5	GEN-I	Shkenbime Cross-Border	AL-GR Greece - IN	-3,217	-5,089	-3,919	-5,914	-18,139	
			AL-KS Kosovo - IN	-49	-722	-107	-180	-1,058	
			AL-ME Monte Negro - IN	-14,675	-35,740	-14,719	-8,498	-73,632	
			Total IN	-17,941	-41,551	-18,745	-14,592	-92,829	
			AL-GR Greece - OUT	42,589	91,438	27,016	21,432	182,475	
			AL-KS Kosovo - OUT	46,901	17,943	5,900	21,708	92,452	
		AL-ME Monte Negro - OUT	27,979	3,760	8,950	38,522	79,211		
		Total OUT	117,469	113,141	41,866	81,662	354,138		
		Transaksionet e brendshme	Shitje Konsumatoreve te Kualifikuar					0	
			Shitje GSA					0	
			Blerje Devolli HPP	-69				-69	
			Shitje Devolli HPP	756	547			1,303	
			Shitje OST					0	
			Blerje AYEN Energy Trading	-6,247		-7,930	-14,990	-29,167	
Shitje Ayen Energy Trading	80		5		5	90			
Blerje KESH	-71,387		-50,057	-16,424	-41,870	-179,738			
Shitje KESH					0				
Shitje FTL					0				
Blerje FTL		-21,240	-10,570	-9,275	-41,085				
Blerje GETA	-28				-28				
Blerje KURUM	-22,633	-3,026		-940	-26,599				
Shitje KURUM			11,803		11,803				
Total transaksione	-99,528	-73,771	-23,121	-67,070	-264,793				
6	GSA	Shkenbime Cross-Border	AL-GR Greece - IN	0	-47	0	-11,069	-11,116	
			AL-KS Kosovo - IN	-1,157	0	-4,895	0	-6,052	
			AL-ME Monte Negro - IN	-8,797	-2,404	-20,675	0	-31,876	
			Total IN	-9,954	-2,451	-25,570	-11,069	-49,044	
			AL-GR Greece - OUT	12,701	25,526	5,702	2,839	46,768	
			AL-KS Kosovo - OUT	449	28,462	4,081	6,373	39,365	
		AL-ME Monte Negro - OUT	6,263	11,261	2,196	10,340	30,060		
		Total OUT	19,413	65,249	11,979	19,552	116,193		
		Transaksionet e brendshme	Shitje Konsumatoreve te Kualifikuar					0	
			Shitje FTL					0	
			Blerje FTL				-18,396	-18,396	
			Shitje OST	2,500				2,500	
			Shitje AES					0	
			Shitje KURUM			246		246	
Blerje KESH	-27,896		-65,696	-8,778	-11,380	-113,750			
Shitje KESH						0			
Blerje KURUM	-2,006	-11,174		-4,119	-17,299				
Shitje GETA	1,459			3,501	4,960				
Blerje GETA	-5,286		-85	-3,218	-8,589				
Blerje Danske Commodities					0				

			Blerje Devoll HPP						0	
			Blerje ReNRGY						0	
			Blerje GEN-1						0	
			Total transaksione	-31,229	-76,870	-8,617	-33,612		-150,328	
7	DANSKE COMMODITIES	Shkenbime Cross-Border	AL-GR Greece - IN	-11,510	-1,079	-6,672	-4,650		-23,911	
			AL-KS Kosovo - IN	-1,601	-2,594	-9,217	-1,077		-14,489	
			AL-ME Monte Negro - IN	-7,536	-6,010	-16,334	-13,147		-43,027	
			Total IN	-20,647	-9,683	-32,223	-18,874		-81,427	
			AL-GR Greece - OUT	14,397	9,438	15,077	4,400		43,312	
			AL-KS Kosovo - OUT	31,981	38,428	14,111	24,355		108,875	
			AL-ME Monte Negro - OUT	14,285	1,858	4,020	4,255		24,418	
			Total OUT	60,663	49,724	33,208	33,010		176,605	
			Blerje AYEN Energy Trading							0
			Shitje AYEN Energy Trading	15	6					21
	Blerje ReNRGY							0		
	Blerje OST	7,607		11,935				19,542		
	Blerje KESH	-46,846	-40,024	-12,960	-14,136			-113,966		
	Shitje KESH							0		
	Shitje GSA							0		
	Shitje AES							0		
	Blerje ENER TRADE	-792	-23					-815		
	Shitje ENER TRADE			40				40		
	Shitje NOA							0		
	Total transaksione	-40,016	-40,041	-985	-14,136			-95,178		
9	NOA	Shkenbime Cross-Border	AL-GR Greece - IN	0	-30	-240	-2,078		-2,348	
			AL-KS Kosovo - IN	0	0	0	0		0	
			AL-ME Monte Negro - IN	0	-670	-4,851	0		-5,521	
			Total IN	0	-700	-5,091	-2,078		-7,869	
			AL-GR Greece - OUT	4,778	15,699	-4,851	667		25,995	
			AL-KS Kosovo - OUT	0	0	0	0		0	
			AL-ME Monte Negro - OUT	1,652	3,581	240	6,851		12,324	
			Total OUT	6,430	19,280	5,091	7,518		38,319	
			Shitje FTL							0
			Blerje FTL		-3,100		-2,100			-25,250
	Shitje KESH							0		
	Blerje KESH	-6,430	-15,480		-3,340			-25,250		
	Blerje AXPO							0		
	Blerje Danske Commodities							0		
	Total transaksione	-6,430	-18,580	0	-5,440			-25,250		
	10	KURUM INTERNATIONAL	Shkenbime Cross-Border	AL-GR Greece - IN	0	0	0	0		0
				AL-KS Kosovo - IN	0	0	0	0		0
				AL-ME Monte Negro - IN	0	0	0	0		0
				Total IN	0	0	0	0		0
				AL-GR Greece - OUT	0	0	0	0		0
AL-KS Kosovo - OUT				0	0	0	0		0	
AL-ME Monte Negro - OUT				0	0	0	0		0	
Total OUT				0	0	0	0		0	
Prodhim HEC-et				54,498	52,004	49,287	49,943		205,732	
Total Prodhim				54,498	52,004	49,287	49,943		205,732	
Shitje Konsumatoreve te Kualifikuar		30962	26,811	14,527	33,687		105,987			
Shitje GSA		2,006	11,174		4,119		17,299			
Blerje GSA				-246				-246		
Blerje Ayen Energy Trading								0		
Blerje GEN-1				-11,803				-11,803		
Blerje Ener Trade		-8,576						-8,576		
Shitje Ener Trade		7,473	10,993	46,809	11,197		76,472			
Shitje GEN-1		22,633	3,026		940		26,599			
Total transaksione		54,498	52,004	49,287	49,943	#VALUE!		205,732		
11		ALPIQ	Shkenbime Cross-Border	AL-GR Greece - IN	0	0	0	-600		-600
	AL-KS Kosovo - IN			0	0	0	0		0	
	AL-ME Monte Negro - IN			-725	-7	-805	-170		-1,707	
	Total IN			-725	-7	-805	-770		-2,307	
	AL-GR Greece - OUT			725	7	805	170		1,707	
	AL-KS Kosovo - OUT			0	0	0	0		0	
	AL-ME Monte Negro - OUT			0	0	0	600		600	
	Total OUT			725	7	805	770		2,307	
	Shitje									0
	Blerje									0
	Total transaksione	0	0	0	0		0			
	12	AXPO ALBANIA	Shkenbime Cross-Border	AL-GR Greece - IN	0	0	0	0		0
				AL-KS Kosovo - IN	0	0	0	0		0
				AL-ME Monte Negro - IN	-280	-61	0	0		-341
				Total IN	-280	-61	0	0		-341
				AL-GR Greece - OUT	180	61	0	225		466
				AL-KS Kosovo - OUT	100	0	3,360	2,085		5,545
				AL-ME Monte Negro - OUT	0	0	360	0		360
				Total OUT	280	61	3,720	2,310		6,371
				Shitje NOA Energy						
Blerje KESH						-3,360	-2,310			-5,670
Blerje EnerTrade				-360				-360		
Total transaksione		0	0	-3,720	-2,310		-6,030			
13		EFT (Energy Financing Team) TIRANA	Shkenbime Cross-Border	AL-GR Greece - IN	-5,374	0	-817	-1,978		-8,169
				AL-KS Kosovo - IN	0	0	-262	0		-262
				AL-ME Monte Negro - IN	-3,991	-932	-14,461	-1,142		-20,526
				Total IN	-9,365	-932	-15,540	-3,120		-28,957
				AL-GR Greece - OUT	3,991	622	14,723	0		19,336
				AL-KS Kosovo - OUT	0	150	0	1,142		1,292
				AL-ME Monte Negro - OUT	5,374	160	817	1,978		8,329
				Total OUT	9,365	932	15,540	3,120		28,957
	Shitje FTL									0
	Blerje AYEN Energy Trading									0
	Shitje AES							0		
	Total transaksione	0	0	0	0		0			
	15	AES (Albanian Energy Supplier)	Shkenbime Cross-Border	AL-GR Greece - IN	0	0	0	0		0
				AL-KS Kosovo - IN	0	0	0	0		0
				AL-ME Monte Negro - IN	0	0	0	0		0
				Total IN	0	0	0	0		0
				AL-GR Greece - OUT	0	0	0	0		0
				AL-KS Kosovo - OUT	0	0	0	0		0
				AL-ME Monte Negro - OUT	0	0	0	0		0
				Total OUT	0	0	0	0		0
Shitje Konsumatoreve te Kualifikuar				14,720	16,830	23,731	27,792		83,073	
Blerje Danske Commodities										0
Shitje AYEN Energy Trading								0		
Shitje FTL								0		
Blerje GSA								0		
Blerje Ener Trade		-14,720	-16,872	-23,755	-27,792		-83,139			
Shitje Ener Trade			42	24				66		
Blerje EFT TIRANA								0		
Total transaksione		0	0	0	0		-66			
Shkenbime Cross-Border		AL-GR Greece - IN	-5,221	-155	-450	-9,301		-15,127		
		AL-KS Kosovo - IN	0	0	0	0		0		
		AL-ME Monte Negro - IN	-2,285	-5,104	-8,262	-4,524		-20,175		
	Total IN	-7,506	-5,259	-8,712	-13,825		-35,302			
	AL-GR Greece - OUT	3,646	5,104	8,177	3,076		20,003			
	AL-KS Kosovo - OUT	0	0	0	0		0			

16	GETA (GREEN ENERGY TRADING ALBANIA)		AL-ME Monte Negro - OUT	1,025	155	450	11,032	12,662		
			Total OUT	4,671	5,259	8,627	14,108	32,665		
			Blerje AYEN Energy Trading					0		
			Blerje Ener Trade					0		
			Blerje ReNRGY Trading	-1,020				-1,020		
			Shitje ReNRGY Trading					0		
			Shitje GEN-1	28				28		
			Blerje GSA	-1,459			-3,501	-4,960		
			Shitje GSA	5,286		85	3,218	8,589		
			Total transaksione	2,835	0	85	-283	2,637		
17	ReNRGY	Shkenbime Cross-Border	AL-GR Greece - IN	0	0	0	-11,469	-11,469		
			AL-KS Kosovo - IN	0	0	0	0	0		
			AL-ME Monte Negro - IN	-25,074	0	-33,990	0	-59,064		
			Total IN	-25,074	0	-33,990	-11,469	-70,533		
			AL-GR Greece - OUT	0	14,360	13,528	0	27,888		
			AL-KS Kosovo - OUT	33,500	18,396	34,110	11,769	97,775		
			AL-ME Monte Negro - OUT	5,537	11,360	0	1,050	17,947		
			Total OUT	39,037	44,116	47,638	12,819	143,610		
			Shitje OST					0		
			Blerje FTL		-2,200	-264	-1,080			
		Shitje FTL					0			
		Blerje KESH	-14,983	-41,916	-13,284	-270	-70,553			
		Shitje KESH					0			
		Shitje GSA					0			
		Shitje GETA	1,020				1,020			
		Blerje GETA					0			
		Blerje Danske Commodities					0			
		Total transaksione	-13,963	-44,116	-13,648	-1,350	-69,533			
		18	ENERGIA GAS AND POWER ALBANIA	Shkenbime Cross-Border	AL-GR Greece - IN	-5,952	0	0	-7,162	-13,114
					AL-KS Kosovo - IN	0	0	0	0	0
AL-ME Monte Negro - IN	-3,878				-3,751	-10,990	0	-18,619		
Total IN	-9,830				-3,751	-10,990	-7,162	-31,733		
AL-GR Greece - OUT	0				0	0	0	0		
AL-KS Kosovo - OUT	0			1,023	0	0	1,023			
AL-ME Monte Negro - OUT	2,129			0	0	0	2,129			
Total OUT	2,129			1,023	0	0	3,152			
Transaksionet e brendshme	Shitje Konsumatoreve te Kualifikuar			8,217	4,093	10,990	10,858	34,158		
	Blerje Ayen Energy Trading							0		
	Blerje Ener Trade	-516	-1,365		-3,696	-5,577				
	Shitje Ener Trade					59				
	Total transaksione	7,701	2,728	10,990	7,162	34,158				
20	EZ-5 ENERGY	Shkenbime Cross-Border	AL-GR Greece - IN					0		
			AL-KS Kosovo - IN					0		
			AL-ME Monte Negro - IN					0		
			Total IN	0	0	0	0	0		
			AL-GR Greece - OUT					0		
		AL-KS Kosovo - OUT					0			
		AL-ME Monte Negro - OUT					0			
		Total OUT	0	0	0	0	0			
		Transaksionet e brendshme	Shitje Konsumatoreve te Kualifikuar	1,105.7	2,123.8	2,598.1	2,124.1	7,951.7		
			Blerje AYEN AS Energi	-1,105.7	-2,123.8	-2,598.1	-2,124.1	-7,951.7		
Total transaksione	0		0	0	0	0				
22	ENER TRADE	Shkenbime Cross-Border	AL-GR Greece - IN	-19,293	-90	0	-11,374	-30,757		
			AL-KS Kosovo - IN	-1,190	0	-2,435	-15,201	-18,826		
			AL-ME Monte Negro - IN	-7,976	-2,373	-1,486	-8,289	-20,124		
			Total IN	-28,459	-2,463	-3,921	-34,864	-69,707		
			AL-GR Greece - OUT	11,675	11,937	33,436	5,442	62,490		
			AL-KS Kosovo - OUT	10,454	1,075	13,563	12,776	37,868		
			AL-ME Monte Negro - OUT	15,142	1,574	0	24,600	41,316		
			Total OUT	37,271	14,586	46,999	42,818	141,674		
			Shitje FTL	1,488	1,344	1,486	1,440	5,758		
			Blerje FTL		-1,320		-3,960	-5,280		
		Shitje OST	3,087				3,087			
		Shitje GETA					0			
		Blerje KESH	-25,680	-17,466	-28,438	-28,820	-100,404			
		Shitje KESH					0			
		Shitje AES	14,720	16,872	23,755	27,792	83,139			
		Blerje AES		-42	-24		-66			
		Shitje Energia Gas and Power	516	1,365		3,696	5,577			
		Shitje Ayen Energy Trading	1,273	3,805	8,189	4,535	17,802			
		Shitje KURUM	8,576				8,576			
		Blerje KURUM	-7,473	-10,993	-46,809	-11,197	-76,472			
		Shitje Danske	792	23			815			
		Blerje Danske			-40		-40			
		Blerje Power and Gas Operator					0			
		Blerje Energia Gas and Power					0			
		Shitje AXPO			360		360			
Blerje Ayen Energy Trading	-6,114	-5,783	-1,557	-1,440	-14,894					
Total transaksione	-8,815	-12,195	-43,078	-7,954	-72,042					
23	KESH sh.a.	Shkenbime Cross-Border	AL-GR Greece - IN					0		
			AL-KS Kosovo - IN					-706		
			AL-ME Monte Negro - IN					0		
			Total IN	0	-706	0	0	-706		
			AL-GR Greece - OUT	2,802	8,860	1,459	28,250	41,371		
			AL-KS Kosovo - OUT	18,880	19,229	27,336	1,717	67,162		
			AL-ME Monte Negro - OUT	0	18,376	26,467	33,509	78,352		
			Total OUT	21,682	46,465	55,262	63,476	186,885		
			Shitje OST		20,440	11,145	12,750	44,335		
			Shitje Ayen Energy Trading	2,728	93	14,560	5,059	22,440		
		Shitje Danske Commodities	46,846	40,024	12,960		99,830			
		Shitje GEN-1	71,387	50,057	16,424	41,870	179,738			
		Shitje GSA	27,896	65,696	8,778	11,380	113,750			
		Shitje Ener Trade	25,680	17,466	28,438	28,820	100,404			
		Shitje NOA Energy	6,430	15,480		3,340	25,250			
		Shitje ReNRGY	14,983	41,916	13,384	270	70,553			
		Shitje AXPO			3,360	2,310	5,670			
		Blerje ENER TRADE					0			
		Blerje Danske Commodities					0			
		Blerje GSA					0			
		Blerje DEVOLL HP					0			
		Blerje GEN-1					0			
		Blerje NOA Energy					0			
		Blerje ReNRGY					0			
		Total transaksione	195,950	251,172	109,049	119,935	676,106			

Shenime:

- Konsumatorët e kualifikuar për secilin subjekt ndryshojnë edhe muaj në varesi të kontratave të nënshkruara nga të dyja palët.
- Shenja (-) është përdorur për energjinë që hynë në rrjet (blerje + import) ndërsa shenja (+) për energjinë që del nga rrjeti (shitje + eksport).
- Cdo vlerë e sipërshënuar është e nominuar - me program (jo faktike me matje)